



SEPTEMBER

September 4, 2015

Luke 14:25-33

Jeremiah 18:1-11

Psalms 139:1-6, 13-18

Philemon 1-21

September 11, 2015

1 Timothy 1:12-17

Exodus 32:7-14

Jeremiah 4:11-12, 22-28

Psalms 51:1-10

Luke 15:1-10

September 18, 2015

Jeremiah 8:18 – 9:1

1 Timothy 2:1-7

Psalms 79:1-9

Amos 8:4-7

Luke 16:1-13

September 25, 2015

Jeremiah 32:1-3a

Psalms 91:1-6

Amos 6:1a, 4-7

1 Timothy 6:6-19

Luke 16: 19-31

Birthdays

SEPTEMBER

September 2	Sarah Balai
September 4	Janice Wolfe
September 5	D. Kekauhi Aarona
September 9	John Cortez Sr. Lana Sue Kaopua
September 12	Jayme Ioane
September 15	Kawehimaeole Umiamaka
September 18	Robert Maeshiro
September 19	Sean Jandoc
September 20	Dorothy Kihewa
September 22	Tracy Fernandez-Green
September 27	Marie Grace Regier Margaret Wolf Gabriel Malani Roxanne Canonigo
September 28	Tommy Chronister Jr.

If you do not see your birthday listed, it means the office does not have the information on file. Please contact the office with your information and we will update our records.



September Flowers

September 4:	Frank & Roberta Jahrling
September 11:	Kūpahu Ohana
September 18:	In Memory of Violet Tavares
September 25:	Aloha Committee

To sign up for our e-newsletter visit kaumakapili.org. You can unsubscribe at anytime at kaumakapili@yahoo.com..

The Kaumakapili Church Mission Statement

Kaumakapili Church, thankful for the gifts received from God, founded in 1838 for the makaʻāinana, the common folk, rich in Hawaiʻian tradition and diverse backgrounds, bounded in covenant with all in the United Church of Christ, led by the Spirit, declares its mission to glorify God by bearing the fruits of God's aloha and gifts, and so proving to be faithful disciples of Christ, who are equipped for the work of the ministry of proclaiming the good news for all people: by witnessing in word and deed, by serving those in need, by welcoming and receiving all people into the church fellowship, and by nurturing and equipping the church members for the growth of the Body of Christ.



"Therefore everyone who hears these words of mine and puts them to practice is like a wise man who built his house on the rock." [Matthew 7:24]

Volume 13, Issue 9

Kepakemapa 2016

KA LEO O KEALOHA

(*The Voice of Love*)

Kaumakapili Church 766 N. King St., Honolulu, HI 96817

Email: kaumakapili@yahoo.com Website: www.kaumakapili.org

Facebook: www.facebook.com/kaumakapili.org

"Nōlaila hoʻi, o ka mea lohe i kēia mau ʻōlelo aʻu, a mala hoʻi ia, E hoʻohālike iā ia me ke kanaka naʻauao, nana i kākulu kona hale maluna o ka pōhaku." [Mataio 7:24]

Come Wind Or Rain



First it was Hurricane Darby that flooded the basement of Hale Kamika. The damage has been mitigated, we are presently waiting for the estimates of damage to come from our insurance company, and then the question will be how is it that we will repair the damage and use this as an opportunity to meet the needs of the future.

Then came Hurricane Madeline, it was forecasted to do some damage, but it moved away from Oahu and while we got some wind and rain, no damage was done.

As I write this article, we are awaiting Lester to come our way. Even as I write the wind is beginning to pick up and rain is about to fall.

Life is like that. We don't know when storms will hit, but we know that storms will come our way. Come what may, the words of the hymn "It is well with my soul, " comfort. Come wind or rain, come sickness or

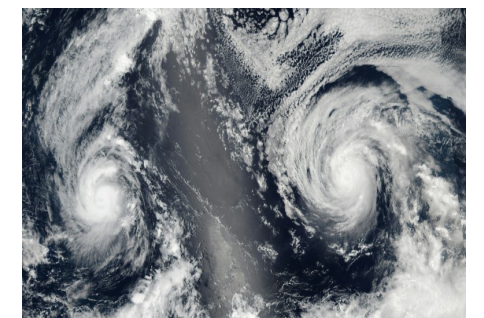
sorrow, no matter what, we are reminded that our loving God in Jesus Christ is always present with us.









The Interim Team is functioning well. I continue to spend twelve days to two weeks here, and am in touch with the team members through email or skype. I have changed my schedule to be present to the first two Sundays of the month so that I will be present to administer the sacraments.

When I am away from Honolulu and visit churches on the Mainland, I am always thankful for Kaumakapili Church, where aloha is felt and where people gather to sing, pray, and listen for God's word.

No matter what the weather, no matter what storms may arise, we know that for us and for Kaumakapili Church, God's love is always present. Thank God.

Kahu David



Kepakemapa 2016 ACTIVITIES						
Lāpule	Pō‘akahi	Pō‘alua	Pō‘akolu	Pō‘aha	Pō‘alima	Pō‘aono
			<u>Hale Aloha/ Classrooms:</u> CLOSED <i>Hale Aloha Outreach is closed for the month of September. No free store donations will be received at this time.</i> All room designations are subject to change.	1	2	3
4 <u>Sanctuary:</u> 10-10:30a CWT 10:30a-12n Worship <u>Auxiliary Hall:</u> 9:00-10:00am Adult Bible Study 9:00am-10:00am Youth Group <u>Ke‘ena Ohina:</u> 9a-10a Ukulele Class (See Matt Motas to confirm) Interim Team: Rev. Hirano	5 <u>Office Closed</u> Labor Day	6 <u>Auxiliary Hall:</u> 5:00pm Adult Bible Study <u>Sanctuary:</u> 6:00pm Choir Rehearsal	7 <u>Ke‘ena Ohina</u> 2-4p Ukulele Class (See Matt Motas to confirm) 	8 <u>Ke‘ena Ohina:</u> 3-5p Ukulele Class (See Matt Motas to confirm) 	9	10
11 <u>Sanctuary:</u> 10-10:30a CWT 10:30a-12n Worship Baptisms <u>Auxiliary Hall:</u> 9:00-10:00am Adult Bible Study 9:00am-10:00am Youth Group <u>Ke‘ena Ohina:</u> 9a-10a Ukulele Class (See Matt Motas to confirm) 10:30-11:30am Pokii Choir 12n Council Meeting Kūpahu Sunday Interim Team: Rev. Hirano	12	13 <u>Auxiliary Hall:</u> 5:00pm Adult Bible Study <u>Sanctuary:</u> 6:00pm Choir Rehearsal	14 <u>Ke‘ena ‘Ohina:</u> 2-4p Ukulele Class (See Matt Motas to confirm) 5-8p Halau 	15 <u>Ke‘ena Ohina:</u> 3-5p Ukulele Class (See Matt Motas to confirm) 	16	17
18 <u>Sanctuary:</u> 10-10:30a CWT 10:30a-12n Worship <u>Auxiliary Hall:</u> 9:00-10:00am Adult Bible Study 9:00am-10:00am Youth Group <u>Ke‘ena Ohina:</u> 9a-10a Ukulele Class (See Matt Motas to confirm) 10:30-11:30am Pokii Choir Aloha Sunday Interim Team: Rev. Randall Furushima	19	20 <u>Auxiliary Hall:</u> 5:00pm Adult Bible Study <u>Sanctuary:</u> 6:00pm Choir Rehearsal	21 <u>Ke‘ena ‘Ohina:</u> 2-4p Ukulele Class (See Matt Motas to confirm) 5-8p Halau 	22 <u>Ke‘ena Ohina:</u> 3-5p Ukulele Class (See Matt Motas to confirm) 	23	24
25 <u>Sanctuary:</u> 10-10:30a CWT 10:30a-12n Worship <u>Auxiliary Hall:</u> 9:00-10:00am Adult Bible Study 9:00am-10:00am Youth Group <u>Ke‘ena Ohina:</u> 9a-10a Ukulele Class (See Matt Motas to confirm) 10:30-11:30am Pokii Choir 12n Imi I Ke Kahu Food Bank Sunday Interim Team: Kahu Sherman Thompson	26	27 <u>Auxiliary Hall:</u> 5:00pm Adult Bible Study <u>Sanctuary:</u> 6:00pm Choir Rehearsal	28 <u>Ke‘ena ‘Ohina:</u> 2-4p Ukulele Class (See Matt Motas to confirm) 5-8p Halau 	29 <u>Ke‘ena Ohina:</u> 3-5p Ukulele Class (See Matt Motas to confirm) 	30	

THE BOARD OF STEWARDSHIP

Looking Ahead

“...direct our daily labor, lest we strive for self alone; born with talents, make us servants fit to answer at your throne.” **

Hear ye! Hear ye! Mark your calendars. Due to the change on the Council Calendar, the Stewardship Drive, at which time we consider pledging to the Lord’s work at Kaumakapili, will now be launched on Sunday, October 23, 2016 with a Kick-Off luncheon . At that time all aspects of the Drive will be reviewed.

***From “God, Whose Giving Knows No Ending”, New Century Hymnal with permission.*

IMI I KE KAHU
(PASTORAL SEARCH)

The pastoral search committee spent many months on the first step to compile a Kaumakapili Church Profile. Questionnaires were sent out to members and friends and with that feedback, the committee diligently worked to prepare the profile. Co-chairperson Phil Regier presented the completed profile to the Church Council on August 14, 2016. This was the most difficult and lengthiest part of the process. The committee will make an effort now to keep members informed as it moves forward toward seeking a pastor for Kaumakapili Church.

Questions and comments may be addressed to members of the search committee co-chairpersons Phil Regier and Buddy Maunakea, Chelsea Fernandez, Luana Jardine, Iris DeRego, Hannah Spencer, Lahela Reinhardt, Moani Wong, and advisor Sybil Schoenstein.



Na Mele Aloha
Aloha Ohana

*Hawaii Mission Houses presents a concert for the whole family. A concert laden with stories and lore October 15th from 5:30 p.m. to 8 p.m. \$100 for season of 4, \$30 each in advance, or \$35 at door.**

“The word ‘ohana includes the extended family, related by blood, marriage, or adoption. Hawaiians composed oli, mele, and hula that expressed their aloha for their ‘ohana. Music and dance celebrating the joy and love of family is featured in the last performance of the Na Mele Aloha series.” For more information, or to buy tickets, check out their website <http://www.missionhouses.org/>.

MISSION Cafe will be serving a special menu for this performance.



Stop! Hold That Thought!

The October 15 Fall Festival, Launa Aloha, is being postponed to October of 2017. We will spend this year gathering and stockpiling our supply of gently used clothing, books, small household items and the like. We will also be concentrating on producing crafty items for our sale.

If you have items now that you would like to donate please see Zena Kaehu, Iris deRego, Roberta Jahrling or David Kaneao and we will be glad to receive your donation. More information will be forthcoming on how you could help. So, stay tuned.

Church Delegate News Kahikuonalani Church



Aloha Kaumakapili,

Members of Kaumakapili Church joined in with 200 plus supporters from Hawaiian churches around Oahu to celebrate the dedication of Kahikuonalani Church's new sanctuary. Special guest included Hawaii Conference Minister, Charles Buck, the Reverend Dr. Patrick Duggan, Executive Director of the Church Building and Loan Fund, and Sherman Hee Hawaii Conference Foundation Executive Director, and Senator Breene Harimoto.

Hau'oli Akaka provided a beautiful Mele Kahea 'Oli followed by Kahu Kekapa Lee from First Chinese Christian Church, sharing a Mele Aloha and Mele Komo 'Oli. Kahu Richard Kamanu offered a

prayer of blessings and shared the significance of the Maile lei that hung



from the top of sanctuary entrance.

Guest were allowed to enter into the new sanctuary once the lei was untied by Cheryl Cudiamat, director of the Keiki Daycare Center at Kahikuonalani Church and her husband Jeoffrey Cudiamat from Structural Hawaii Inc. Jeoffrey played a pivotal role as the architect and contractor in this huge endeavor.

During the service Momi Maunakea received a plaque of appreciation for the support her husband, Henry Maunakea provided the church leaders at Kahikuonalani when they were contemplating rebuilding their sanctuary.

A beautiful luau followed with great entertainment by a local hula halau, local musicians and Kahikuonalani's singspiration group.

It was a truly a wonderful event and a testament of God's love



and faithfulness. May we all be reminded to be patient and wait on the Lord. Wonderful things happen when we do!

Mahalo Ke Akua.

Lorna

Pledge Income

	<u>2016</u>	<u>2015</u>
January - August	\$91,286	\$69,274

Pledge income news continues to be good! We continue ahead of pledge income year-to-date when compared to last year. At eight months into the year 2016 we are ahead of last year by \$4,860. Good news indeed.

In the month of August we received \$9,786 in pledge income. Our target is to reach \$11,300 per month, so that was not good news for the month of August. Pledge income varies in the months of the year. In the years 2015 and 2016, pledge income has varied from a low of \$6,635 to a high of \$18,843 in a month! Let's see what happens in the month of September.

The Stewardship Committee has started to put together the pledge drive for pledge income in the year 2017. The drive starts in October and pledge cards are returned in November.

Please join this drive as pledge income is crucial to the continuing activities of our church. Please encourage others to join us. Pledge income, increasing pledge income, is crucial to help Kaumakapili Church attract, secure and support a new kahu.



Upcoming Events

SEPTEMBER

Fri., Sept. 5	OFFICE CLOSED Labor Day
Sun., Sept. 11	Sunday School Kick-off Kupahu Sunday

OCTOBER

Sun., Oct. 23	Stewardship Luncheon and 2016 Drive Kick-off
---------------	---

Outreach Ministry Volunteer Schedule

Due to the recent flooding of the Hale Kamika, the Hale Aloha is closed for repairs. Therefore we will not be receiving donations during the month of September. To volunteer and learn more about our outreach ministry opportunities contact Wendy Garcia.



Help our foodbank with your donation through Give Aloha, Foodland's Annual Community Matching Gifts Program. From September 1-30th, 2016 present your Maika'i Card at the checkout counter at Foodland and inform the cashier that you would like to make a donation to Kaumakapili Church. Our registration code is: **78059**. Your donation will be added to your grocery purchase total. You can give up to \$249.00.



“Got Fruit?” An Event for the Entire Family

“I am the vine, you are the branches. He who abides in me, and I in Him, he it is that bears much fruit, for apart from me you can do nothing. But the fruit of the Spirit is love, joy, peace, patience, kindness, goodness, faithfulness, gentleness, self-control; against such there is no law.”
John 15:5 and Galatians 5:22-23

On Saturday, August 27, 2016, over 60 members and friends of all ages gathered for an afternoon and evening of worship, activities, music, exercise and a delicious healthy meal together. Sponsored by the Music Committee, the event “Got Fruit?” took place on the campus of Kaumakapili Church to focus on:

- planting and nourishing the fruit of the Spirit,
- discovering, encouraging, developing and inspiring worship and praise
- strengthening the ‘ohana through interesting activities, sessions and fellowship



Games – ping-pong, board games, ulumaika, Portuguese horseshoe led by **Peteru Green**

‘Ohana and Daily Walks – worship time to focus on the scriptures and brief “Daily

Walks”, words of spiritual application of scripture to our daily lives led by **Momi Maunakea and Kahu Sherman Thompson**

Sessions – learning “I Am the Vine” by Akiko Chang, done in break-out groups of singers, instrumentalists, youth and pokii led by **Akiko Chang, Kaori Martin, Pohai Wong, Chelsea Fernandez, Elia Akaka, and Trevor Maunakea**

Caring for the Body – exercise to keep the body moving led by **Kanoe and Moani Wong**

Working as a Family – groups of six per table working together to decorate and prepare their tables for dinner led by **Kahau Schoenstein**

Healthy Dinner – delicious and healthy dinner of rosemary chicken, pork sliders, hapa rice, salads and fruit dessert prepared by the kitchen crew led by **Tracy Fernandez Green and Ruby Kaneao**

Special Activities – Kanikapila: singing and playing Hawaiian music led by **Ka’ala Carmack** and Organ Crawl: learning about Kaumakapili’s pipe organ and a chance to look into the organ chamber led by **Kahau Schoenstein**



On August 28, 2016, keiki and kupuna were all connected as they shared the song “I Am the Vine” with the congregation in Sunday service in a creative and unique presentation by the singers, instrumentalists, pokii and including a rap by the youth. In addition, the participants in “Got Fruit?” shared a special anthem “Tutu” by Queen Liliuokalani who it is said composed the song for a Kaumakapili fundraiser.

Mahalo to all the luna who helped in making this event possible, to members of Kalihi and Moanalua for joining us, and to **Kona Mann** for designing the brochure.

This event was certainly a “shot in the arm”, marking a beginning of more to come. It serves as encouragement for our leaders and families that work so hard to keep the spirit alive in the church.

Jesus is the Vine, we are the branches. He gives us the fruit of the Spirit: Love, Joy, Peace, Patience, Kindness, Goodness, Faithfulness, Gentleness, Self-control. May we use them to continue His kingdom.



“I Am the Vine”
by Akiko Chang

I am the vine. You are the branches
Apart we can do nothing at all.
I am the vine. You are the branches
Together O Lord, we can do all things.

The fruit of the spirit are many, with them do no wrong
Yes, you’ve got the fruit of the spirit in you.
Love, joy, peace and patience,
Kindness, goodness, faithfulness,
Gentleness, self-control live them every day.

NEIGHBORS IN NEED-OCTOBER 2nd



Neighbors in Need (NIN) is a special mission offering of the UCC that supports ministries of justice and compassion throughout the United States. One-third of NIN funds support the Council for American Indian Ministry(CAIM). Two-thirds of the offering is used by the UCC's Justice and Witness Ministries(JWM) to support a variety of justice initiatives, advocacy efforts, and direct service projects through grants. (www.ucc.org/nin/)



“Beside Still Waters” 25th Anniversary Benefit Dinner



United Church of Christ Transition House

A safe house for women and their children who are survivors of domestic violence

Local entertainment, country store and silent auction
Homemade treats and handicraft donations are welcomed for sale

DATE/TIME:
Thursday, November 10, 2016
5:30 – 8:30 p.m.

LOCATION:
Central Union Church – Parish Hall
1660 South Beretania Street
Honolulu, Hawaii

Cost:
\$45 per person
Checks made payable to: UCC Transition House
Mail to: P.O. Box 11885 Honolulu, HI 96828

For tickets or further information, please call Meg Miguel at 848-2027
Ticket purchase deadline is October 24, 2016.



Give Aloha
Code #78666



AUW
Code #80250



Combined Federal Campaign
Code #35427