

An email advertisement for the Christian Century Magazine caught my eye. The Century is a publication I have subscribed to for 38 years. The magazine's mission statement is "Think critically and live faithfully." The magazine and its writers have helped keep me theologically grounded and connected to solid biblical thinking throughout my ministry. It is must reading for thoughtful Christians. The slogan in the ad: "Friends don't let friends hold on to bad theology."

Sadly, there is a lot of bad theology out there. I must admit I have not had much luck with those friends who have grabbed hold of a strain of Christianity that has been hijacked by bad theology and uncritical thinking. Their religious posts on Facebook make me cringe. So far, I have resisted the urge to reply, "How can you believe such tripe and excuse such behavior?"

Marilynne Robinson writes in her recent book of essays: "This present brand of Christianity speaks of itself as threatened and embattled, and it approaches the rest of the country cowering and threatening and wagging its finger, then declares it is on account of its exceptional piety that so many find it unattractive."

As I have been preaching through Matthew's gospel I have noticed that Jesus kept it simple. He reminded us to "love God and your neighbor as yourself" and "To treat others the way you would want to be treated." He did not call it social justice – he simply called it love. Jesus clearly claimed he is among the hungry, the thirsty, the naked, and the imprisoned. He warns we will be judged by how we treat those in need.

I was moved by the article in Washington Post (4/2/19) about one El Paso church organization that is helping with the onslaught of families fleeing violence in El Salvador and Guatemala. Ruben Garcia founded Annunciation House in 1978 as a young man, then absorbed in waves of Central American refugees fleeing Civil war. Garcia raised six children from El Salvador — all siblings — after their parents were killed in the conflict.

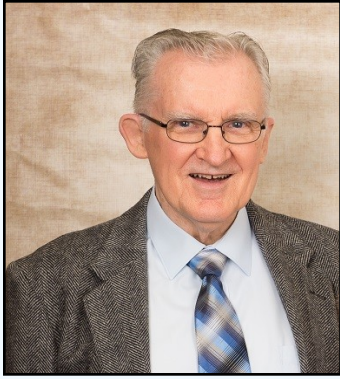
Garcia says he was inspired to found the ministry by Mother Teresa who humbly taught to welcome the stranger, feed the hungry, and care for the sick. Today, Ruben works closely with the Border Patrol in finding housing and food for desperate asylum seekers. People in El Paso and around Texas are very generous and supportive of the work he is doing.

The article concludes with an experience Garcia shared.

A few years after he opened Annunciation House a destitute mother from Mexico with two sick children showed up one day at his door. She collapsed outside his office. He took the family in. A few days later, when Garcia got a call from a contact looking for someone to clean her house, he asked the mother whether she wanted the job. When she returned at the end of the day, she showed him the money she'd earned: \$15.

She gave me \$10 and told me to save it for her. Then she gave me the five and told me to give it to someone who might need it more, who was even poorer than she was. "That," said Garcia, "was one of the biggest donations we've ever received."

Together in Christ,  
James Brassard



## *Celebrating the Life of Caluan Pals*

We will celebrate Cal's life on Saturday, April 6 at 2:00PM in the Sanctuary, followed by a luncheon in Dodds Hall. Our thoughts and prayers are with Cal's family and friends.

## *Holy Week Schedule*



### **ONE Service Only at 10AM on April 14 — Palm Sunday**

We will have a drama, some special music by children and adults, followed by a catered luncheon. Sermon is titled, "A Heroes Welcome?"

### **Maundy Thursday, April 18 at 7:30 PM**

A special edition of Wednesday Night Live starts at 5:55 PM. At 7:30 PM, a candle-light communion service based on Matthew 26:17-30: "A Meal for the Distressed."

### **Good Friday, April 19 at 7:30 PM**

An intergenerational Stations of the Cross begins outside by the campfire with the disciples and concludes in the Sanctuary as the veil of the temple is torn in half. Congregational singing will accompany the journey of Jesus.

### **April 21 — *Easter Sunday***

#### **The Resurrection of the Lord**

#### **7:00 AM Sunrise Service in the Memorial Garden**

Music led by Sam Guillermo. Gary Cox will preach and celebrate the sacrament of the Lords Supper. The Session will host a **hot Easter breakfast** of scrambled eggs, pancakes, sausage, fruit, juice, and coffee from 7:30-9:00AM. Continental breakfast will be served from 10-11:AM for families arriving for the Children's Easter program.

#### **The Children's Easter Program**, (including Easter Egg Hunt,

Blossoming of the Cross, and the Easter lesson) is at 10AM.

Our Services in **Celebration of the Resurrection** will be held at 9AM with a Contemporary Worship and an 11AM Blended Worship featuring classic Easter hymns, the choirs, and special instrumental music.

# *Worship Notes*

**April 7th:** We conclude the series on Jesus teaching ministry in Matthew with the Parable of the Last Judgment Matthew 25:31-46. Jesus suggests we will be judged by how we lived out the Golden Rule (7:12) "in everything—do to others what you would want them to do to you."



## *Thank You!*

We want to thank everyone for their kindness to our family during the illness and death of my husband, David Wolfe. Your prayers, calls, cards, visits and flowers were very much appreciated. David loved CCPC and the many friends he made there. We also want to thank James for guiding us through the beautiful memorial service and for his many visits with David over the years.

We were so impressed with the wonderful luncheon the deacons prepared and so appreciated the work and planning required. They are truly an amazing and caring group.

The Wolfe Family

## *Thank You!*

Dear Christian Community Presbyterian Church,

Thank you for your faithful financial support to our ministry with the Church of Central Africa Presbyterian. It is a joy to walk together in partnership as we serve in God's mission.

With grateful hearts!  
Luta & Jeremy Garbat-Welch

## *Got Early Music?*

Our "fledgling" Recorder Ensemble has taken flight! We have four players who meet in the choir room every Sunday immediately following the 11:00 a.m. service for fifteen minutes. We have begun working on "Jesu, Joy of Man's Desiring" and look forward to our debut on Sunday, May 19th! If interested, please speak with Rick.

# Warm Nights

**May 5 to 12, 2019**



Warm Nights is the name we commonly use to refer to PG County's Hyperthermia Program. Now that CCSi, the organization that manages Warm Nights, is trying to run the shelter year round it sounds a bit strange to call it Warm Nights in May. However, most people know what Warm Nights is so we will continue to use the name. There are many opportunities for CCPC volunteers to provide support. You can prepare breakfast or

dinner, make bagged lunches with supplies provided by Mission Council, serve as an over-night host or help set up the cots and equipment in Dodds Hall on Sunday, May 5th. We know that May is a very busy month for many families, but we hope you can fit in a little time in your schedule to support this important mission program.

## Lenten Readings

**Looking for a different Lenten discipline this year?**

*"Thy word is a lamp unto my feet, and a light unto my path."*

Join us in the Sanctuary each morning (except Sundays) during Lent (March 7th through April 20th) at 7:15 AM for the reading of the daily lectionary and a brief prayer. We're usually done by 7:30 AM.

## Pasta Palooza!

**Sunday, April 14 at 11:15 AM**

There will be one church service at 10 am and the luncheon will follow the service in Dodd's Hall. All church members are invited to participate in this event and we are expecting a large crowd. We are excited to have the event catered this year with a pasta bar featuring different pastas and sauces. **Please sign up to bring**

**a salad, bread, or dessert to accompany the pasta bar.** Children's Ministry will provide a sheet cake. We are also looking for volunteers to set up that morning and to clean up after the luncheon. For more information regarding signup or additional information, please contact Justin Devine at

[ccpcdirced@verizon.net](mailto:ccpcdirced@verizon.net). Hope to see you there!





## CHRISTIAN COMMUNITY

# WOMEN'S CORNER

## Gratitude

### Sharon Youngdahl, Retreat Leader 2019

Not only did I attend the Women's Retreat for the first time, I was also a first time leader. God bless Cyd Radden-LeSage and Peggy Oates for encouraging me and for their devoted service to PWOC. My hope was to design a creative program built around the stones we have walked on in our pasts and the stones we would like to walk on into our futures, always looking for the light. The overall concept was where and how did we receive light or enlightenment to help or guide us on our journeys over smooth or bumpy paths. I must thank the following people who led blessings for our meals and all those who constructed the various elements of the Sunday Worship Service - so beautifully incorporating the theme. All efforts were inspired and very spiritual. God was surely at work shining on and through everyone.

Meal Blessings:	Mary Brock, Shirley Doyle, Ann Fleming and Laurel Cox, Peggy Oates.
Call To Worship:	Marjorie Tanner, Betty Haeussler, Cyd Radden-LeSage
Prayer of Confession:	Astrid and Rebecca Jonas
Children's Message:	Olivia MacMillan – Leader Kids: Marty Sippel, Jen Woods, Misa Close, Emilie Rubin
Scripture:	Sharon Dixon and Bridget Peters, Mary Saylors Thompson
Prayer of Illumination:	Mary Brock, Lisa Botluk, Priscilla Bouic
Prayers for the People:	Donna Hopkins, Shirley Cooke, Sharon McNamara, Emily Conrad
Sermon:	Skit - <i>In Need Of Light</i> Dimly Sisters – Sue Evans, Jean Andrews, Heather Miller Doctors: Shirley Doyle, Debbie Armstrong, Julia Leaman Nurse : Jan Brown <i>Sharon Youngdahl Director</i>
Benediction:	Peggy Oates, Nancy Honeyford, Kerryaine Hiller, Sarah Bible



## Easter is on Sunday, April 21, 2019

At CCPC, we honor and remember loved ones with Easter lilies. Thirty-two single stem with 5-7 blooms have been ordered. The cost is \$14.00 and the **deadline to get your order in is by Palm Sunday, April 14.**

The order form is below or you can get one off the table in the atrium. Please put the completed order form with payment in the Flower Committee mailbox in the church office or you may mail it in. Any questions, please contact Judyann Feinstein at [jdith.a.glazener@gmail.com](mailto:jdith.a.glazener@gmail.com) or (240) 351-4121.

### *Easter Lily Order Form*

*Given By:* \_\_\_\_\_

**We want to be sure names are spelled correctly.  
Please Print**

*Name:* \_\_\_\_\_

*Name:* \_\_\_\_\_

*Name:* \_\_\_\_\_

*Quantity* = \_\_\_\_\_ @ \$14.00 = \_\_\_\_\_ (total)

*Enclosed is \$\_\_\_\_\_ for my total order.*

*Make checks payable to CCPC-Flower Committee*

## **Thank you!**



# Giant Gift Cards Program!

## Do you know about our Giant Corporate Gift Cards Program?

Many years ago, CCPC youth ministry set up a monthly fundraising program with Giant Foods to purchase corporate gift cards (now called *Gift for Causes*). Each month, CCPC congregants purchase Giant gift cards and a percentage of the total sale is given back to CCPC. Over the years, the youth programs have benefited immensely from this steady stream of monthly income. The youth get 5% back on the total sales, which in the past has run between \$300-\$500/month. Our CCPC family has been wonderfully committed, but over time participation in the program has dwindled, especially with the variety of grocery stores in the Bowie area now (when we started there were only two local grocery stores where everyone shopped!). But, due to the generosity of our standing order holders (you know who you are and bless you!), we still bring in about \$150 month for the youth ministry account. Over the years, these funds have contributed greatly to providing monetary support for the youth group retreats, bi-annual trips to Montreat, and other youth oriented events in the church.

## How it works.

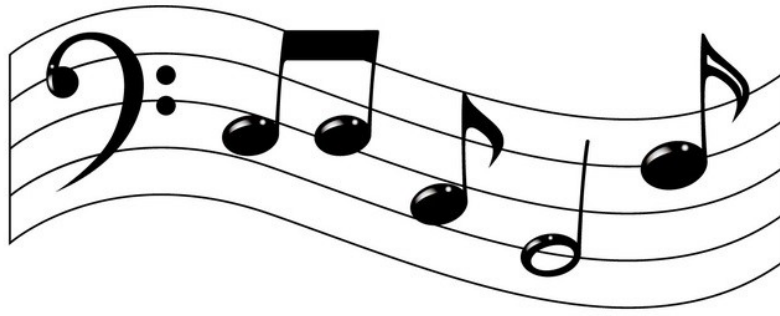
Debbie Armstrong leads this fundraising program. Here is how it works: 1) orders are taken on the second Sunday of each month; 2) gift cards are delivered on the third (sometimes fourth) Sunday of the month; 3) funds are collected at the time an order is placed (or Debbie tracks you down for payment at delivery). Participants can set up standing orders and Debbie automatically places the order each month. She sends out a reminder the week before placing the order to be sure no one has any changes for the month (and some recurring members have paid via the on-line payment account set up with church). Participants can hold or stop their monthly order at any time.

## Shall we take it a step or two further?

Several of you have asked if we can do this same type of program with other grocery stores in the area. We can. But we need commitments to make it worthwhile. Most have a monthly minimum card order of \$1000.00. We can look into adding other grocery store chains, but we need to know your interest. We are looking at Aldi, Whole Foods, Safeway, among a few. **Please see Debbie Armstrong or Justin Devine if you would like to talk about participating in our program and what grocer you prefer.** We will research it a little further and follow-up with those interested.

We appreciate all of the support for the Giant gift card program over the years. You have truly made a positive impact for our youth ministry by your participation. We hope to continue the program and expand it based on your interest.

# Musical Events!



*"Harriet Tubman:*

*The Chosen One" and "Portals Through Time"*

**Sunday, April 7th at 4:00 pm**

Don't forget to join us in the Sanctuary for Nationally acclaimed actress, Gwendolyn Briley-Strand. She will present the life of Harriet Tubman and her adventures as a conductor on the Underground Railroad. At conclusion of performance, the audience will be invited to participate in an open conversation with Ms. Briley-Strand.

*A free will offering will be received  
and a reception will follow after all performances.*

## AND . . .

**Don't miss the last of our spring concert series  
on Sunday, May 5<sup>th</sup>!**

Organist Wesley Parrot will present a recital at 4:00pm in the Sanctuary. Wesley received the Artist's Diploma in 1974 from the Curtis Institute of Music and the Master of Music in 1982 from the Eastman School of Music. He served as organist at The New York Avenue Presbyterian Church and The Church of The Epiphany in Washington, D.C. He also served as organist in several Philadelphia area churches and recently was appointed organist at the Philadelphia Episcopal Cathedral.

In 1979, Wesley won first place in 3 organ playing competitions across the U.S.A. (Ft. Wayne, Indiana, Ottumwa, Iowa, and Pasadena, California). In 1982, he was a finalist in the Grand Prix de Chartres, France, where he was the only American candidate to remain in the running out of more than 70 contestants.

The program will include works by C.P.E. Bach, Handel,  
Clara Schuman, Lefébure-Wely and Widor.

***Our fall concert series will begin on Sunday, October 6<sup>th</sup>***



# Christian Community Presbyterian Church



3120 Belair Drive  
Bowie, MD 20715  
Phone (301) 262-6008  
Web: <http://ccpc.bowiemd.org>  
E-mail: [ccpcbowie@verizon.net](mailto:ccpcbowie@verizon.net)



CCPC, the first Protestant church in Levitt Bowie, was born from a passion for Christian mission in the local community, and this focus continues.

*Our Mission: To worship God, to grow in faith and community,  
and to place our gifts in the service of Jesus Christ.*

**Please remember CCPC in your will.**



## Belair Cooperative Nursery School

The school is a non-profit, non-sectarian, and non-partisan organization. It's located in the CE Building of Christian Community Presbyterian Church.

Call 301-464-5782 or Email [info@belaircoop.org](mailto:info@belaircoop.org)

[www.belaircoop.org](http://www.belaircoop.org)



## Imagine - Yoga & Wellness Center



Located in the CE building, offers yoga and a variety of wellness programs to CCPC members and the community. For more information, visit [www.ImagineThePlace.com](http://www.ImagineThePlace.com), call 443-510-6308, or e-mail [info@ImagineThePlace.com](mailto:info@ImagineThePlace.com). Scholarships available.

