

I was once part of a career day forum at a local high school. Our Rotary club had each profession represented and it was fun to talk with young people who were seriously seeking their calling in life. During a question and answer session, a young woman, who was interested in ministry, asked me, "What is the most Jesus-like thing your church does?" I thought about it for a moment before answering. We are most like Jesus when we are "being with." When someone is suffering, you go and hold their hand and pray with them. You are practicing being with. God sent prophets to set peoples' hearts right. Then, he sent Jesus to be with and live amongst us. We are most Christ-like when we are being with.

The last two days CCPC has witnessed the power of being with. After worship on Sunday, we had a "Party in Pink." This was a luncheon and program to support Peggy Oates and Debbie Armstrong who are in the midst of cancer treatments. People were encouraged to wear pink. Laurel Cox read some encouraging words from the New Testament and then invited everyone who had survived cancer to come forward and join Debbie and Peggy for a prayer and the laying on of hands. A larger group than I expected came forward. We had survivors as young as five, Penelope Miller, to those still vibrant at over 85. One of the buttons produced for the day said, "Cancer is only going to be a chapter in your life, not the whole story." Being with is a powerful experience. It was a wonderful gathering and reminds us what the church is best at doing: Being with.

Monday found us in the Sanctuary for a memorial service for Beverly Clemence. Beverley was a 54-year member of the CCPC choir. Many current and former members who had sung with Beverley formed an Alumni Choir to sing, "I Carry You in My Heart." The scene and the sound are almost exactly like my vision of the angelic chorus in heaven. The best part of memorial services is the sharing of stories. The theme of the day was connections. When God's people come together and serve together and love one another, deep connections are formed and over the years strengthened. Sitting and sharing a meal together adds to these connections. When we gather to celebrate the life of one of the Saints, we testify to our faith that Beverley is continuing in Christ's presence as she joins the Church Triumphant.

We are most like Jesus when we practice and celebrate being with. Powerful stuff. It requires us to set aside time regularly to be with other people. The greatest gift you can give someone is not money and it isn't some great intellectual insight. The greatest gift is the faithful presence with them of someone who really cares about them as a person.

Grace and peace,

James Brassard



Script Card Extension!

Script cards have been extended by one week!
You now have until Sunday, November 26 to purchase script cards.

If you have any questions, please contact Justin Devine or Joi Kesner at ccpcyouth15@gmail.com or 707-344-3325

Worship Notes

Stewardship Sunday—November 19: We will dedicate our “Estimate of Giving” cards for 2018 at the conclusion of both worship services. We will have a celebratory brunch in Dodds Hall between services at 10am. The sermon is the first of five on the Old Testament prophets. We begin with Amos, a small town shepherd who travels to the big city to roar like a lion. Amos exhorts Israel to “seek good and not evil, that you may live.” Amos reminds the people that what God wants is justice. It has been said, if you like the prophet Amos, you don’t understand him.

November 26: The great prophet Jeremiah writes in 29:1, 4-14 to the people now in exile, “Know that I have great plans for you.” How does God comfort us when we go through hardship?



In Memory of

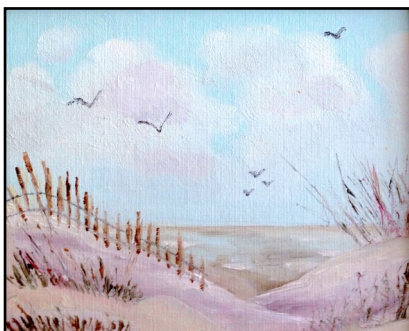
Beverly Edith Clemence

November 7, 1930–October 26, 2017

It is with great sadness that we announced the death of **Beverly Clemence**. Beverly passed away peacefully on October 26, 2017, while surrounded by her family. She is survived by her sons Andrew, Kevin (Lara), and Thomas (Amy), and her granddaughter Alaina.

We celebrated Beverly's life on Monday, November 13, 2017, at 11:00 am in the CCPC Sanctuary. Over 140 people attended Bev's service. After the service, we joined the Clemence family in Dodds Hall for a luncheon prepared by the deacons. A private ceremony for the releasing of ashes followed the luncheon.

Beverly was a very talented painter. A few of her paintings were included in her memorial program, and we'd like to share them with you:



Beverly's full obituary is on Beal's Funeral Home's website: <http://www.beallfuneral.com/>

Our thoughts and prayers are with the Clemence family.

2017 Interfaith Thanksgiving Worship Service

Join us at St. Matthew United Methodist Church, located at 14900 Annapolis Road, on Wednesday, November 22 at 7:30pm for this year's Thanksgiving worship service.

The host pastor will be Daniel Mejia. The speaker will be former councilman, Jack Jenkins. The theme is "Giving Thanks and Compassionate Action." Choirs from CCPC and St. Matthew's will sing together for the service.



Christmas Families 2017

Christmas Families is kicking off Sunday, November 19!
We will be set up in the atrium after both services.
Please stop by and select a family to support.

If you would like to volunteer to help in any way please talk to Mikaela Devine (707-344-3321).

Christmas Families Schedule

Last year we ran into a lot of schedule changes due to the speed of our great volunteers. Times will be determined closer to actual events. Therefore, please note, everything is subject to change.

Please also follow the CCPC Facebook Page for daily updates!

Nov 19 (Sun) Sign Ups

Nov 26 (Sun) Sign Ups Continue

Nov 26 – Dec 3 (Sun-Sun) Gift Drop Off (Location TBD)

- Dec 6: TBD Set up Dodd's Hall for Gift Sorting & Wrapping
- Dec 7: 9am-5pm Gift Sorting & Checking
Gift Sorting, Checking & Wrapping
- Dec 8: 9am-5pm Gift Wrapping
- Dec 9: 9am-5pm Gift Wrapping (continued if required) (time is tentative)
Pick up food order from Aldi's (non-perishables)
Re-Set Dodd's Hall for Food Sorting (time is tentative)
- Dec 10: 11:30 am Baked Goods Due (for use during Monday pick up)
11:30 am-2 pm Food Sorting
2 pm – 4 pm Consolidate Gifts and Groceries
- Dec 11: 9 am – 8 pm Family Pick Up/Delivery (an extra day may be added)

2017 Christmas Poinsettia Orders



Christmas poinsettias will be here soon!
We will have 7" pots with 30 reds, 6 whites, 6 pinks, and 12 marble.

The price is \$14 each.

Poinsettias will be delivered on December 14.

All orders must be in by Monday, December 11.

Any questions, please contact Judyann
Feinstein at judith.a.glazener@gmail.com or
240-351-4121. Thank you!

Your Name: _____

Phone #: _____

Given in **memory or honor** (circle one) of:
(please print clearly)

Qty = _____ @ \$14.00 each, for a

TOTAL \$ _____

Specify color(s): ____ red ____ white ____ pink ____ marble

Thank you so much for your generous contribution.

The Flower Committee.



CHRISTIAN COMMUNITY

W
O
M
E
N'
S
C
O
R
N
E
R

Calling all Women

Our Christmas Potluck



Join us in Dodds Hall on

December 3 at 12 Noon!

Bring a dish to share and a favorite decoration.

Turkey and ham will be served.

If you have a story about celebrating

Christmas in another country that you would like to share,

please contact Peggy Oates peggyoates@hotmail.com

or Cyd Radden-LeSage

wyonative@verizon.net (301) 352-9582.

Christmas Program Schedule

The Children and Youth will be presenting the Christmas program on December 17 at 10am in Dodds Hall.

Christmas Program practices will be November 26, December 3, and December 10 during the Sunday School Hour.

Final dress rehearsal will be December 16 at 10am. if you wish for your child to participate, contact Justin Devine by email ccpcdirced@verizon.net.



Family Movie Night Potluck

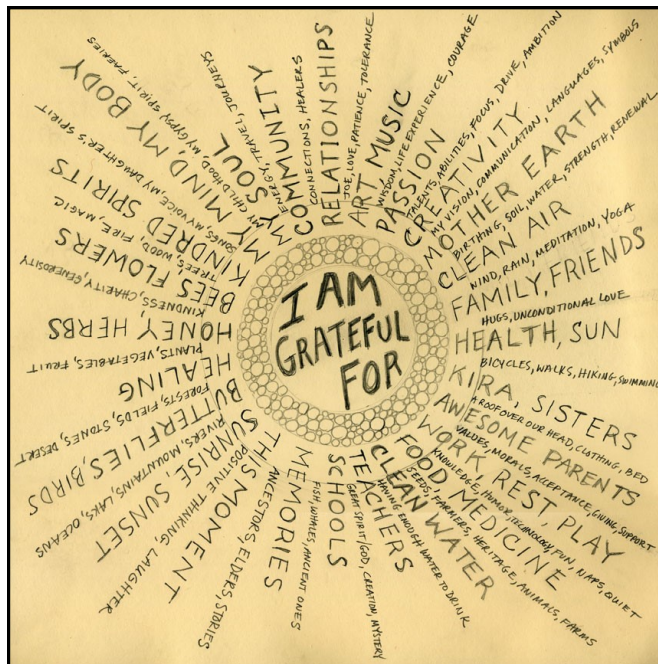
Saturday December 2pm at 5:30pm to 8pm in Dodds Hall

Please join us for a night of fun and fellowship to celebrate the beginning of the Christmas season with a Family Movie Night and Potluck Dinner. Bring your bean bags, blankets and pillows and come ready to stretch out and enjoy a movie in Dodds Hall, have dinner with your church family, do a craft, and make your dessert.

There will be ham; we will provide drinks and dessert. Please bring a salad or side. There will be slots provided via SignUp Genius, and a paper sign up on the kiosk in the Atrium. Please also feel free to RSVP via Facebook or email to ccpckids@gmail.com. All ages are welcome to attend and feel free to invite a friend! **Rumor has it a visitor from the North will be in attendance.**

Gratitude Ceremony at Imagine

November 19th 1-3pm



Every year we gather to show our gratitude to the Native Americans who gifted us with a beautiful ceremony designed to bring healing to the earth and all its inhabitants. This special ceremony was developed with love from the Iroquois and given to Reiki Master Teacher Colleen Benelli, who taught it to us at the International Reiki Retreat many years ago.

We will begin by setting up a beautiful altar and placing items that reflect our gratitude. There will be many healers there to give healing to one and all. We will perform this amazing ceremony, and then if there's time and the weather's nice, finish with a bonfire and some singing.

This is a great chance to bring yourself into a space of love in time for the upcoming holidays. We will be accepting donations to benefit the Bowie Food Pantry, either canned goods or money. The event is our gift to you.

Contact info@imaginetheplace.com for more information and
THANK YOU for all your support!

Christian Community Presbyterian Church



3120 Belair Drive
Bowie, MD 20715
Phone (301) 262-6008
Web: <http://ccpc.bowiemd.org>
E-mail: ccpcbowie@verizon.net



CCPC, the first Protestant church in Levitt Bowie, was born from a passion for Christian mission in the local community, and this focus continues.

Our Mission: To worship God, to grow in faith and community, and to place our gifts in the service of Jesus Christ.



Belair Cooperative Nursery School

The school is a non-profit, non-sectarian, and non-partisan organization. It's located in the CE Building of Christian Community Presbyterian Church.

Call 301-464-5782 or Email info@belaircoop.org

www.belaircoop.org



Imagine - Yoga & Wellness Center



Located in the CE building, offers yoga and a variety of wellness programs to CCPC members and the community. For more information, visit www.ImagineThePlace.com, call 443-510-6308, or e-mail info@ImagineThePlace.com. Scholarships available.

