

# Trinity Torch



FEBRUARY 2022

Inside this issue:

|                       |       |
|-----------------------|-------|
| Address Updates       | 13    |
| Announcements         | 4     |
| Baptismal Birthdays   | 8     |
| Birthdays             | 17    |
| Calendar              | 18    |
| Human Care            | 9     |
| JOY Club              | 5     |
| Luth Church Charities | 3     |
| Missionary News       | 15,16 |
| Parish Ed/Bible Study | 5     |
| Principal News        | 8     |
| RLOM                  | 4     |
| T.R.I.P.              | 13,14 |
| Voice of Hope         | 10-12 |

In this issue of the Torch, you will see letters of thanks that were received after we sent financial gifts to our various ministry partners. We demonstrate our love for others in the way we pray for them at church and in our homes. We also demonstrate our love for others through our generosity and partnership.

We support our many missionaries including:

Rev. Hesham Shehab – Missionary to Muslim Community  
Michael (and Naomi) Ersland – Lutheran Bible Translators in Ghana, Africa  
Deaconess Lori Wilbert – Northern Illinois District Prison Ministry

We also support Mission work in the following way:

*Comedor San Mateo* Soup Kitchen – in the Pilsen Community of Chicago  
Lutheran Church Charities – Disaster and Crisis Response, Human Care, K-9 Ministry  
Redeeming Life Outreach Ministry – our new Maternity Home Project in Illinois  
Love INC – Local World Vision outreach for community Life, Social and Spiritual Support  
Caring Network – Crisis Pregnancy Centers in DuPage County

And from time to time there are other outreach and ministry events that we participate in like Honduras mission trips, local disaster relief, etc. In the month of February when many are thinking about LOVE, we know that love is demonstrated by words and actions. We pray for and give generously because we love others as God has first loved us in Christ Jesus.

God demonstrated His own LOVE for us as well:

<sup>8</sup> but God shows his love for us in that while we were still sinners, Christ died for us. <sup>9</sup> Since, therefore, we have now been justified by his blood, much more shall we be saved by him from the wrath of God. <sup>10</sup> For if while we were enemies we were reconciled to God by the death of his Son, much more, now that we are reconciled, shall we be saved by his life. <sup>11</sup> More than that, we also rejoice in God through our Lord Jesus Christ, through whom we have now received reconciliation. -Romans 5:8-11

In the month of February, we think about how we love others and how others love us. But let us also consider how God loves us in Jesus. God's gift to us is forgiveness – through sacrifice. God gives His own Son for us. It is a free gift of grace. We did not deserve it nor did we earn it. Pure gift. Amazing and beautiful!

Together, we will continue to support Missionaries and Missions that share this great gift of Jesus with others.

In Christ,

*Pastor Bob*



# HISTORIC ST. MATTHEW LUTHERAN CHURCH

"COMEDOR SAN MATEO" SOUP KITCHEN

2108 W 21<sup>ST</sup> ST, CHICAGO, IL 60608

TELEPHONE: (773) 847-6458

WEBSITE: WWW.STMATTHEWCHICAGO.ORG (UNDER CONSTRUCTION)



Rev. Cesar G. Sifuentes, Pastor  
Mobile: (312) 636 - 6496

Deaconess Elly Sifuentes  
Email: Ceelly1973@gmail.com



**"For I was hungry, and you gave me something to eat"**

*Trinity Lutheran Church  
11500 Germann Church Road  
Burr Ridge, IL 60527*



12-6-21

The love and the peace of our Lord Jesus Christ be with you and your loved ones. I consider it a privilege to be writing this thank-you note to you. Thank you for your generous donation of \$ 1,567.- to help support St. Matthew's faith mission. We thank God almighty for the blessings we received by sharing Christ's love and compassion with the people of Chicago's Pilsen Community.

I will always pray for you and remember to always serve with love and compassion for the poor. I pray the Lord continues to bless your efforts to assist St. Matthew's self-supporting mission.

Sincerely,

*We wish you blessings of peace,  
love and joy in Jesus Christ, our  
eternal savior.  
Merry Christmas!*

*Rev. Cesar Sifuentes*  
Rev. Cesar Sifuentes, Pastor

Note to IRS: No goods or services were provided to the donor other than intangible religious benefits.



## Lutheran Church Charities

LCC K-9 Ministries • Disaster Response • Crisis Response • Human Care  
*Working with you to show the Mercy, Compassion, Presence and Proclamation of Jesus Christ*

December 27, 2021

Trinity Lutheran Church  
11500 German Church Rd  
Burr Ridge, IL 60527

Dear members of Trinity Lutheran Church,

Greetings in the name of Jesus Christ.

Our Lord said: *"For I was hungry and you gave me something to eat. I was thirsty and you gave me something to drink, I was a stranger and you invited me in, I was sick and you looked after me, I was in prison and you came to visit me." ... "The King will reply, 'I tell you the truth, whatever you did for one of the least of these brothers of mine, you did for me.'* Matthew 25:35-40.

Matthew 25 is the foundation of Lutheran Church Charities. Our Mission is to share the **Mercy, Compassion, Presence and Proclamation of Jesus Christ** in all that we do.

We carry out our mission by working directly with and through our churches and Christian Ministries. Whether it would be an elderly couple needing a car, a family needing furniture, food for our ethnic ministries, support for the soup kitchen at St. Matthew Lutheran Church in Chicago, disaster relief work, disaster response work in Haiti or other countries, LCC K-9 Comfort Dog Ministry, *Kare 9* Military Ministry, Hearts of Mercy & Compassion/Crosses for Losses, deaf ministry, parish nursing ministry, Bible studies to help people better know the Mind, Method, Manner and Ministry of Jesus – the list goes on and on – whatever the need is to touch hurting lives with the compassion of Christ! That's what we do, and because of your support and partnership, lives are touched by Jesus Christ!

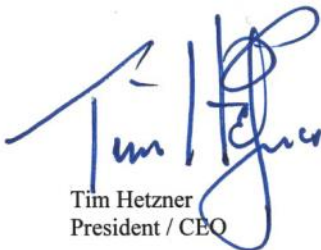
I want to personally thank you for your faithful support to Lutheran Church Charities and for your gift of **\$2,000.00** to the **Lutheran Church Charities Disaster Relief Fund. Dollar Per Dollar**, EVERY dollar given goes directly to your chosen cause. Your support allows Lutheran Church Charities to continue to touch lives with the presence of Jesus Christ.

Yes, **Christ's Mercy and Compassion** are daily being put into action because of your faithful support! Our Prayer is:

**O God, you have called your servants to ventures of which we cannot see the ending;  
by paths as yet untrodden, through perils unknown.  
Give us faith to go out with good courage, not knowing where we go;  
but only that your hand is leading us and your love supporting us.  
Through Jesus Christ our Lord. Amen.**

Serving Together, Serving Christ, so we can serve others IN HIS NAME,



  
Tim Hetzner  
President / CEO

*Thank you for all you  
do and for all of your support for  
those suffering and in need.  
God Bless you.*

NO GOODS OR SERVICES WERE PROVIDED TO THE DONOR OTHER THAN INTANGIBLE RELIGIOUS BENEFIT

3020 Milwaukee Ave Northbrook, Illinois 60062 Phone: (866) 455-6466 Fax (866) 451-1476  
LCC@LutheranChurchCharities.org www.LutheranChurchCharities.org

Dear Trinity Lutheran Church Burr Ridge,

## **Greetings to you in Christ and Happy New Year!**

I want to start the new year off with an update for the Redeeming Life Illinois Expansion project. I know you have not heard much from us since we announced that the Carpentersville site would not work out. However, I want to assure you that LOTS of activity has been taking place behind the scenes to move the project forward.

**God's plan for this maternity home expansion is much BIGGER than what our earthly minds were originally envisioning.** We have an amazing team in place who have been busy working through the vetting process of a potential new location in close proximity to the original Carpentersville site.

**This project requires multiple partners to collaborate with the end in mind.** RLOM is partnering with a local LCMS church, an engineering firm and the Village to work through multiple complexities in order to achieve a win-win!

**It is very important that you know that we are still extremely dedicated to this expansion project and this direction looks very promising!** Unfortunately, because there are multiple parties involved, I cannot share the exact location and other details with you yet. As soon as we can make the BIG announcement you will be the first to know! We continue to be uplifted and strengthened by your patience and support.

### **Here is a brief recap of our progress and where we are today:**

- There is an existing home on the prospective location that would initially serve as our maternity home (after some renovation)
- The location has enough acreage to BUILD a brand-new maternity home right next to the existing home
- Once the new maternity home is built and operational, the existing home would be repurposed to serve as the transitional living home

The location provides an opportunity for RLOM to open its doors to women quickly while also allowing new construction to take place at the same time

**We are genuinely grateful for your continued support and patience!** We look forward, with great hope and joy, to the opening of this new Illinois home. I know you do, too!

*Galatians 6:9, "And let us not grow weary of doing good, for in due season we will reap, if we do not give up."*

In His Service,  
Sheryl DeWitt  
Executive Director  
**Redeeming Life Outreach Ministries, Inc.**  
P.O. Box 1496  
Sanford, FL 32772-1496  
Office: 407-790-9745



# Parish Education – Bible Study Schedule

## February 2022

If you have questions or desire more information, you may contact the class leader or DCE Rob Grady – 708-839-1200 ext. 4. All studies are weekly unless otherwise noted.



**Sunday Morning** - Sunday morning “Fit for Life” class continues at 9:45 a.m. in the church library. “Christian”, a study by Andy Stanley, will begin at 9:45 a.m. in the school library.

Youth Bible Studies – 9:45 a.m. – 10:45 a.m. Youth Bible Class meets in the school conference room. Sunday School for Three-Year-Old through Grade 8 will meet in the church basement from 9:45 -10:45 a.m.

**Tuesday Evening** - Pastor Bob will continue to lead his Tuesday evening study. The study will begin at 7:00 p.m. in person or online via Facebook Live. We will continue studying the book of Acts. Please join us!

**Wednesday Morning** - Men’s Bible Class will meet weekly at 6:30 a.m. in the Church Library. Facilitated by Tom Bruns, we will continue our study of the book “Irresistible” by Andy Stanley.

**Wednesday Morning TLC** - We will begin a new study on Ruth and Esther on February 9 and 23. We usually meet the second and fourth Wednesday and any fifth Wednesday at 10:30 a.m. We will meet in the church library. We will continue our study of Ruth and Esther.

**Wednesday Afternoon TLC** - TLC Bible Study Group will meet on February 2 and 16 at 4:30 p.m. in the School Conference Room. The class is led by Sharon Wendte (630-455-1775). We have begun a study entitled “The Jesus You Never Knew” by David Jeremiah.

**Thursday Evening** - A study based on the television show “The Chosen” will continue in February. You can still join us at 6:30 p.m. in the church library. The video each week is about 45 minutes long. We will have discussion to follow. The plan is to conclude by 8:00 p.m. Our February dates are the 10th and the 24th.

**Friday Evening** - Join Cliff and Judy Gustafson as they study “Prayer”. Contact the Gustafsons at 815-372-9937 for more information and the meeting dates in February.

## JOY Club



Join us on **Thursday, February 17 at 11:30 a.m.** in the Fellowship Hall.  
Please bring a \$5.00 gift for Crazy Bunco.  
Contact Joyce Tomes at 630-257-2927 if you have questions.

## HOLY BAPTISM

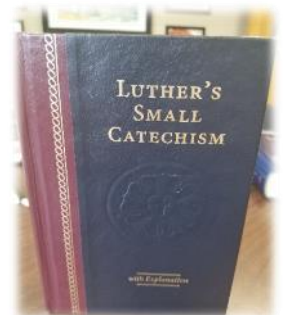
### The Nature of Baptism

#### *What is Baptism?*

Baptism is not just plain water, but it is the water included in God’s command and combined with God’s Word.

#### *Which is that word of God?*

Christ our Lord says in the last chapter of Matthew: “Therefore go and make disciples of all nations, baptizing them in the name of the Father and of the Son and of the Holy Spirit.” (Matthew 28:19)





**Lutheran Bible Translators**  
www.lbt.org

Email: GiftRecords@lbt.org  
Gift Records: (660) 228-0481  
Main Office: (660) 225-0810  
PO Box 789, Concordia, MO 64020

Trinity Lutheran Church  
11500 German Church Rd  
  
Burr Ridge, IL 60527-0831

Thank you for your gift to Lutheran Bible Translators and those who do not yet have God's Word in the language of their heart. Your gift may qualify you for LBT membership. Please visit [www.lbt.org/members](http://www.lbt.org/members) to find out if you qualify for membership.

| Date Designation and Amount                                 | Tax-deductible* |
|---|-----------------|
| 12/31/2021 Missionary: Ersland, Michael & Naomi: \$1,000.00 | \$1,000.00      |

God's Blessings,

Dr. Mike Rodewald  
Executive Director

\*Tax-deductible as allowed by law. No goods or services were received. Contact ID: 36159

-----Returning this portion with your next gift helps ensure proper designation.-----

Please designate this contribution for:  
 Missionary: Ersland, Michael & Naomi: \$1,000.00  
 Every Language Fund  
 Other \_\_\_\_\_

Make checks payable to:  
**Lutheran Bible Translators**  
**PO Box 789**  
**Concordia, MO 64020-0789**

Every effort is made to honor donor designation preferences, however, all gifts are subject to the discretion and control of Lutheran Bible Translators.

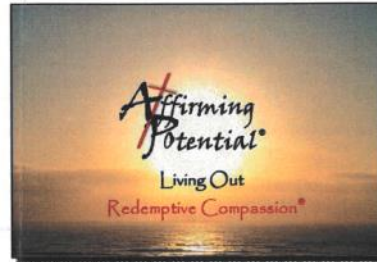
From: Trinity Lutheran Church --- 36159

# Love INC Transformational Ministry: Moving Forward Together – *Personal Growth & Life Skills Classes for the Community*

## Affirming Potential® Class



Love INC  
Love In the Name of Christ



**Affirming Potential** is a life-changing, 12-week journey built on the universal truth that God has created each of us with worth and potential. The class teaching, group discussions, and personal reflection assignments help participants accept the past, better understand the present, and prepare themselves to lean into and embrace their future. This experiential process addresses:

- Community—sharing our journey with others
- Physical—our stuff or needs do not define us
- Emotions—taking control rather than out of control
- Relationships—how they influence our lives
- Spirituality—what or who determines truth for us
- Dreaming—an important component in moving forward
- *Life Purpose Statement*—helps us define our legacy
- Dream Selection Kit - kick starts the process
- Filtering Dreams—for validity and season of life
- Setting goals and action steps—to set and execute the plan

**To learn more about the Moving Forward Together program and to enroll in the next Affirming Potential class, please call Love INC to attend the next Participant Orientation session: Phone # 630-512-8665.**

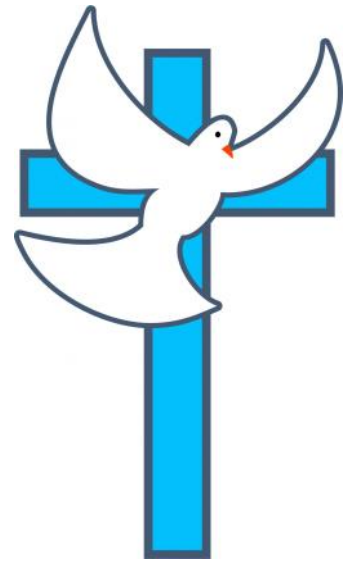
*Leave you name and a brief message and your call will be returned.*

## February Baptismal Birthdays

1 Alysa Kocek  
Lisa Lewandowski  
Amy Pauly  
Mary Windzio  
Olivia Wittwer  
Payton Wittwer  
2 Brett Benes  
3 Kristy Wunglueck  
4 Sheri Abernathy  
Ed Bowlin  
Joshua Koshiol  
Brooke Taylor  
5 Annette Simon  
6 Peter Sakoulos  
8 Betty Pastori  
9 Sharon Marwitz  
10 Hannah Barnett  
Benjamin Remes  
12 Zoey Kabel  
14 Donna Halla  
15 Nancy Beaudry

Ethan Bond  
Mitchell Giliano  
Deb Hammes  
Dolores Joiner  
16 Brooke Zausa  
17 JoAnna Carroll  
Anthony Pomadchin  
18 Leslie St. Clair  
21 Deby Bowen  
22 Lori Trinche  
23 Dorothy Supeter  
Matthew Supeter  
Kellan Tyree  
Sue Voelz  
24 Kelly Payne  
25 Malina Carli  
Marilyn Rampage  
Norm Tiedt  
Susan Zaccari  
26 Stephen Pahr  
27 Mirielle Ofei

28 Linda Bakalyar  
Ryan Cohen  
29 Zachary Rothfahn



## Principal News

**Put on the whole armor of God, that you may be able to stand against the schemes of the devil. Ephesians 6:11**

Greetings in the name of our Lord!

Do you know any families looking for an in-person, family-friendly Christian environment? Do you know someone that is looking for a low teacher to student ratio? Sign up for a tour of Trinity with Mr. DeWitt soon! We will be giving tours of our school to new families. Tours can be scheduled for after school hours or on weekends. Please share this information with anyone you know that may be interested in an amazing educational opportunity for their child(ren). Our students and parents love Trinity, and we would love you to spread the word!

Re-enrollment and enrollment are just around the corner. As a reminder, we give \$500 toward your tuition for every student that you refer to us that enrolls! Talk about a great opportunity to teach more young people about Christ!

This In His Service, Andy DeWitt



Christmas is Jesus, Trinity School's Christmas Program



## Special Invitation to Meet Our Leaders

Both science and Scripture tell us that human life begins at conception. Trinity and LCMS congregations from all across America have a timely opportunity to both share this message and help show tangible love to moms and their babies in their prayers and support.

Enter David and Katelyn Jung, who recently read about the LCMS \$1 million dollar life grant matching program for congregations and asked if they might share an idea with Synod President, Rev. Dr. Matthew Harrison and Northern Illinois District President, Rev. Dr. Allan Buss at the recent Chicago March for Life. Both LCMS senior leaders attended on behalf of speaking on the God-given value of all human life and met and greeted scores of Lutherans who came from all around the district and as far away as Nebraska for this event, in spite of the challenging January weather.

David, who is the son of Bill and Judy Jung, pictured right, and Katelyn, are young parents moved by the size of their baby girl, Sophia now aged two who was born prematurely and had a birthweight of approximately 4 lbs. Katelyn remarked that Sophia was so tiny to hold, both she and David wished they could somehow go back and recapture those early precious days. Their newborn son, Joseph, was baptized at Trinity on January 30<sup>th</sup> at the 11 a.m. service.

The value of all life has been passed down by Bill and Judy to the next generation and no doubt will be passed to Sophia and Joseph and many others from the impact of this new idea. The Jung's hope to create a picture frame and tiny wooden pieces that will be added-to monthly as a baby goes through developmental stages in the womb. The highly detailed beautifully crafted woodcut will start out with a tiny heart at the center that will remind us of the humanity of the tiny unseen human whose heartbeat begins at just 5 to 6 weeks in the pregnancy. Our hearts, though super tiny, are fully developed by the 10<sup>th</sup> week of pregnancy. Often a mom may not even know she is pregnant at this time.



Please join us in the excitement about this new project which will be shared initially with children in our Lutheran schools in chapel services for Redeeming Life Outreach Ministries, and left as a reminder of the baby they are helping to save. David hopes to produce these beautifully crafted woodcuts as a special gift item for new moms to remind them of those precious stages of life in the womb and to serve as a visual witness to the culture around us that babies are a beautiful gift from God.

For more information on how you can help support the matching gift opportunity which will also benefit Redeeming Life Outreach Ministries and our Caring Network Pregnancy Center, please see Pastor Bob or Lori Trinche.

## Human care

St. Matthew's continues to serve warm meals twice weekly. Many thanks for the donations. Last time I was there, we gave 11 winter coats to the homeless.

Greeting cards will be sent to the homebound within the next month. Also, we are looking for volunteers to call 1-2 of our homebound members monthly. If interested, please email me at [deb7911@comcast.net](mailto:deb7911@comcast.net).

Blessings,  
Deb Hardtke





“You have been told, O man and woman, what is good;  
and what does the Lord require of you but to do justice,  
to love kindness and to walk humbly with your God.”

- Micah 6:8

**Up-date on classes** – The ministry continues with the full support of prison staff. The individual assigned to my program and class has gone out of her way to ensure that my students are vetted, class work delivered promptly to cells as well as picked up again within a week and sent back to me. I am now on my third book and group of students! I am reminded once again of God’s faithfulness in this ministry and work.

I am intrigued as I read my student’s answers to the questions assigned for each chapter; the work they turn in is often raw, honest and full of heartache. I hear their stories of growing up in poverty and violence, the pain of isolation from family as they do their time and the fear of being forgotten. However, I also hear of God’s grace and the mystery of His spirit at work in their lives as they share their faith walk and trusting in a God who walks with them. These testimonies of their faith is what keeps me growing in my faith – it is why the church needs to remain with the community of believers behind the wall. We have much to learn from those we least expect to learn from. God’s spirit is always at work as we comfort those in prison and remain present with them. We do this to the end that their focus remains on God’s faithfulness. The men continue to teach me, teach us. Yes, God is alive and well in each of our lives AND behind the walls of a prison!

**Here is a sample of their work from our class:**

**The question:** When did you come to realize God’s love?

**Daniel P. answers:** “I started to realize God’s love when I started to look for it. Even in the darkness, particularly in the darkness, God continues to show himself to me and provide grace and mercy. I hope to grow and build my relationship with Him through diligence in prayer and study.”

**The question:** The author says that God is with us in the “messy places” of our lives. What are the messy places in your life? How is God with you in the messy things? **Al S. says:** “Prison, of course. I’m an absent father, son, brother, uncle, nephew and cousin. I struggle with depression. Being able to provide. My struggle is to remain hopeful in a dark place and not being understood....

Yet, I find that no matter how dark things seem, I find His light clearly guiding me.”

**The question:** Who is a “nobody”? **Al S. says,** “People treated Jesus as if he was a nobody, that should put us all on notice as to who we call a nobody....Jesus says to love thy neighbor, he resides in all of us. So no one is a no-body!”

**Up date on re-opening:**

March 2022 Stateville plans to re-open to community chaplains and programs. The population of inmates will be quite different. Stateville has always been a maximum-security institution. The facility is transitioning to a five and under prison (men who have under five years left to complete on their sentence).

The facility will be program oriented. Stateville Prison was built in 1923, opened in 1925, and has made many changes through the years. A program-oriented prison will enable more inmates to experience change and positive growth as they prepare to re-enter society. I will keep you posted.

My weekly mailings continue to five IDOC prisons where former students have transferred. These mailings include prayers, devotions and sermons.

I have also been working with several men now released from prison living in the Chicago land area. It has been a blessing to be able to provide resources and counseling as needed. I will continue this work for now.

**Many thanks to each of the individuals, churches and organizations who continue to support this work and ministry – I simply could not do it without your continued monetary support and constant prayer.**

Peace+  
Deaconess Lori Wilbert

## DONATIONS

Your tax deductible donation will ensure that prison ministry and programs continue at Stateville Correctional Center in Joliet.

Checks should be made out to:  
NID Prison Ministry/Lori Wilbert

Send to the following address:  
No. IL District Office • 2301 S Wolf Rd. • Hillside, IL 60162

If you have questions, call the district office at 708-449-3020. You may designate your donation for a particular item or to general expenses that will ensure this ministry continues into the future.

# Voice of Hope Behind the Wall

Deaconess Lori Wilbert  
Northern Illinois District,  
2301 S. Wolf Road  
Hillside, Illinois 60162

Dec. 30, 2021

*Dear Trinity Lutheran,*

***Many thanks for your generous donation of \$1,000.00, I remain grateful for you & your support of my ministry!***

The situation with programming at this time has not changed, *essential staff only* are allowed in Stateville at this time. Staff provide me with weekly updates regarding the class work I send in as well as information on my students and any other resources and information they may need.

At this time, many inmates and staff are vaccinated. My class remains strong and the students continue to do excellent work. I started my third class with 16 students in November. Mailings of prayers, devotionals and readings continue for my Stateville population as well as five other IDOC prisons where many of the inmates I worked with previously have transferred (and one federal prison).

I remain grateful that staff on site continue to distribute my class materials to the cell houses as well as collecting assignments each week to send back to me. My program is one of only a handful that the prison has allowed to continue in this way. I receive many notes of gratitude from my students thanking me for the class and materials I send in; it has helped them stay focused and aware of God's presence in their lives. For many of the individuals it is the only time they hear God's word of encouragement. We need to continue our work behind the wall, from a distance for now and hopefully in person again at some point.

***Be well and know that I thank God for you as I continue my work and ministry!***

In the Peace of Christ that  
Keeps us in His grace +



"He has showed you what is good. And what does the Lord require of you?  
To act justly and to love mercy and to walk humbly with your God."  
Micah 6:8

The No. Illinois District Office is recognized by the IRS as a 501 (c) (3) organization. As such, your donation is tax deductible to the fullest extent of the law.

# TRIP ORDER FORM

\$ \_\_\_\_\_ **Order Total (Please make checks payable to "Trinity Lutheran School" and attach to order)**

Waiver: In placing this order, I release TRIP and/or Trinity Lutheran of any responsibility for lost or stolen certificates and I acknowledge there are no refunds or exchanges of orders. Contact Michele in the office for any

|                         |  |
|-------------------------|--|
| Name:                   | _____ Held for my family account for dispersement. |
| Email:                  | _____ Another Trinity family:                      |
| Cell Phone: # (       ) | _____ Applied to the                               |
| A text will be          | Tuition Assistance Fund.                           |

Delivery: All orders will be available for pickup between 8:00 - 3:30 in the school office the Friday following the order date, or sometime sooner. **Multi-family/friend orders can be grouped in a single pickup: Name:**

**Shop online for more merchants or amounts, or reload avail. gift cards @www.shopwithscrip.com Trinity**

**Member Code: C73LF95B7L57 Orders submitted Mon. morning @ 9 a.m. Order Due Dates: \*January 10\***

**\*February 7\* \*March 7\* \*April 4\* \*May 9\* \*June 6\***

| Automotive | %    | QTY | Total |
|------------|------|-----|-------|
| AutoZone   | 8.0% |     | \$25  |
| Shell      | 1.5% |     | \$25  |
| Shell      | 1.5% |     | \$50  |
| Shell      | 1.5% |     | \$100 |
| Speedway   | 4.0% |     | \$25  |
| Speedway   | 4.0% |     | \$50  |
| Speedway   | 4.0% |     | \$100 |

| Clothing            | %     | QTY | Total |
|---------------------|-------|-----|-------|
| American Eagle Outf | 10.0% |     | \$25  |
| Banana Republic     | 14.0% |     | \$25  |
| Children's Place    | 12.0% |     | \$25  |
| Gap                 | 14.0% |     | \$25  |
| Marshalls           | 7.0%  |     | \$25  |
| Old Navy            | 14.0% |     | \$25  |
| T.J. Maxx           | 7.0%  |     | \$25  |
| T.J. Maxx           | 7.0%  |     | \$100 |

| Department Stores | %     | QTY | Total |
|-------------------|-------|-----|-------|
| Bloomingdale's    | 12.0% |     | \$25  |
| Kohls             | 4.0%  |     | \$25  |
| Kohls             | 4.0%  |     | \$100 |
| Macy's            | 10.0% |     | \$25  |
| Macy's            | 10.0% |     | \$100 |
| Target            | 2.5%  |     | \$25  |
| Target            | 2.5%  |     | \$50  |
| Target            | 2.5%  |     | \$100 |
| Walmart           | 2.5%  |     | \$25  |
| Walmart           | 2.5%  |     | \$50  |
| Walmart           | 2.5%  |     | \$100 |

| Entertainment   | %    | QTY | Total |
|-----------------|------|-----|-------|
| AMC Theaters    | 8.0% |     | \$25  |
| Chuck E. Cheese | 8.0% |     | \$10  |
| Marcus Theatres | 8.0% |     | \$25  |

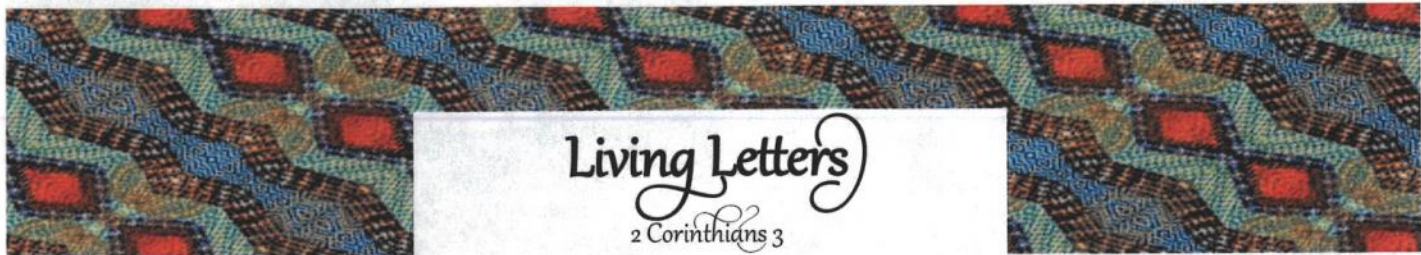
| Grocery               | %    | QTY | Total |
|-----------------------|------|-----|-------|
| CVS Pharmacy          | 6.0% |     | \$25  |
| Jewel                 | 4.0% |     | \$25  |
| Jewel                 | 4.0% |     | \$50  |
| Jewel                 | 4.0% |     | \$100 |
| Mariano's (IL only)   | 4.0% |     | \$25  |
| Meijer (not AK or HI) | 3.0% |     | \$25  |
| Meijer (not AK or HI) | 3.0% |     | \$50  |
| Meijer (not AK or HI) | 3.0% |     | \$100 |
| Pete's Fresh Market   | 4.0% |     | \$20  |
| Sam's Club            | 2.5% |     | \$25  |
| Sam's Club            | 2.5% |     | \$100 |
| Walgreens             | 5.0% |     | \$25  |
| Walgreens             | 5.0% |     | \$100 |

| Home Improvement | %    | QTY | Total |
|------------------|------|-----|-------|
| Ace Hardware     | 4.0% |     | \$25  |
| Lowes            | 4.0% |     | \$25  |
| Menards          | 3.0% |     | \$25  |
| Menards          | 3.0% |     | \$100 |
| The Home Depot   | 4.0% |     | \$25  |
| The Home Depot   | 4.0% |     | \$100 |

| Pets     | %    | QTY | Total |
|----------|------|-----|-------|
| Petsmart | 5.0% |     | \$25  |

| Restaurants                     | %     | QTY | Total | Specialty            | %     | QTY | Total |
|---------------------------------|-------|-----|-------|----------------------|-------|-----|-------|
| Applebee's                      | 8.0%  |     | \$25  | Amazon               | 2.3%  |     | \$25  |
| Arby's                          | 8.0%  |     | \$10  | American Airlines    | 6.0%  |     | \$100 |
| Auntie Anne's                   | 6.0%  |     | \$25  | Barnes & Noble       | 8.0%  |     | \$25  |
| Bonefish Grill                  | 10.0% |     | \$50  | Bass Pro Shops       | 10.0% |     | \$25  |
| Buca di Beppo                   | 8.0%  |     | \$25  | Bath & Body Works    | 12.0% |     | \$10  |
| Buffalo Wild Wings              | 8.0%  |     | \$25  | Bed, Bath, & Beyond  | 7.0%  |     | \$25  |
| Buona Beef                      | 8.0%  |     | \$10  | Bed, Bath, & Beyond  | 7.0%  |     | \$100 |
| California Pizza Kitch          | 8.0%  |     | \$25  | Best Buy             | 4.0%  |     | \$25  |
| Carrabba's                      | 10.0% |     | \$25  | Best Buy             | 4.0%  |     | \$100 |
| Cheesecake Factory              | 5.0%  |     | \$25  | Build - A - Bear     | 8.0%  |     | \$25  |
| Chili's/ Maggiano's             | 11.0% |     | \$25  | buybuyBaby           | 7.0%  |     | \$25  |
| Chipotle                        | 10.0% |     | \$10  | Cabela's             | 10.0% |     | \$25  |
| Chipotle                        | 10.0% |     | \$25  | Claire's             | 9.0%  |     | \$10  |
| Cinnabon                        | 6.0%  |     | \$25  | Comfort Suites       | 3.5%  |     | \$50  |
| Cold Stone Creamer              | 8.0%  |     | \$10  | Container Store      | 9.0%  |     | \$25  |
| Cracker Barrel                  | 8.0%  |     | \$10  | Dick's Sporting Good | 8.0%  |     | \$25  |
| Cracker Barrel                  | 8.0%  |     | \$25  | Discover Universal G | 1.2%  |     | \$50  |
| Dunkin                          | 3.0%  |     | \$10  | Disney               | 3.0%  |     | \$25  |
| Dunkin                          | 3.0%  |     | \$25  | Disney               | 3.0%  |     | \$100 |
| Freddy's                        | 8.0%  |     | \$25  | DSW                  | 8.0%  |     | \$25  |
| Grubhub                         | 4.0%  |     | \$5   | Fannie May Candies   | 25.0% |     | \$10  |
| IHOP                            | 8.0%  |     | \$10  | GameStop             | 3.0%  |     | \$25  |
| Lou Malnati's                   | 8.0%  |     | \$10  | Great Clips          | 8.0%  |     | \$25  |
| Lettuce Entertain Yo            | 12.0% |     | \$25  | Groupon              | 7.0%  |     | \$25  |
| Maggiano's/Chili's              | 11.0% |     | \$25  | H & M                | 7.0%  |     | \$25  |
| Moe's Southwest Gr              | 6.0%  |     | \$25  | Hallmark             | 4.0%  |     | \$25  |
| Noodles & Co.                   | 8.0%  |     | \$10  | HomeGoods            | 7.0%  |     | \$25  |
| Olive Garden                    | 9.0%  |     | \$25  | Hotels.com           | 6.0%  |     | \$100 |
| Outback Steakhouse              | 10.0% |     | \$25  | iTunes               | 5.0%  |     | \$15  |
| P.F. Chang's                    | 8.0%  |     | \$25  | iTunes               | 5.0%  |     | \$25  |
| Panda Express                   | 8.0%  |     | \$25  | Joann                | 6.0%  |     | \$25  |
| Panera Bread                    | 8.0%  |     | \$10  | Jos. A. Banks        | 10.0% |     | \$25  |
| Panera Bread                    | 8.0%  |     | \$25  | Michael's            | 4.0%  |     | \$25  |
| Potbelly                        | 8.0%  |     | \$10  | Nike                 | 12.0% |     | \$25  |
| Rainforest Café                 | 9.0%  |     | \$25  | Office Depot/Max     | 5.0%  |     | \$25  |
| Red Lobster                     | 8.0%  |     | \$25  | Overstock.com        | 8.0%  |     | \$25  |
| Red Robin                       | 8.0%  |     | \$25  | Pottery Barn         | 8.0%  |     | \$25  |
| Shaw's Crab House               | 12.0% |     | \$25  | Staples              | 5.0%  |     | \$25  |
| Sonic                           | 8.0%  |     | \$10  | Shutterfly           | 9.0%  |     | \$25  |
| Starbucks                       | 7.0%  |     | \$10  | Sephora              | 5.0%  |     | \$25  |
| Starbucks                       | 7.0%  |     | \$25  | Supercuts            | 8.0%  |     | \$25  |
| Subway Restaurants              | 4.5%  |     | \$10  | TopGolf              | 8.0%  |     | \$50  |
| Taco Bell                       | 5.0%  |     | \$10  | Ulta Beauty          | 6.0%  |     | \$25  |
| Texas Roadhouse                 | 8.0%  |     | \$25  | Vera Bradley         | 7.0%  |     | \$50  |
| TGI Friday's                    | 9.0%  |     | \$25  | Visa                 | 1.3%  |     | \$50  |
| Wendy's                         | 6.5%  |     | \$10  | Visa                 | 1.3%  |     | \$100 |
| Wildfire                        | 12.0% |     | \$25  | Wayfair              | 6.0%  |     | \$100 |
| Total \$ first side, 1st column |       |     |       | West Elm             | 8.0%  |     | \$25  |
| Total \$ first side, 2nd column |       |     |       | Yankee Candle        | 8.0%  |     | \$5   |
| Total \$ this side, 1st column  |       |     |       | Online Selection:    |       |     |       |
| Total \$ this side, 2nd column  |       |     |       | Total \$             |       |     |       |

Thank you for supporting Trinity Lutheran School.



# Living Letters

2 Corinthians 3

VOLUME 7 ISSUE 5  
NOVEMBER 2021

Dear friends and family,

If I (Michael) kept a journal, this would be a leaf in it.

September brought us back to the US abruptly. We were not planning on it, but we thought God was leading us in that direction. My mom had been in the hospital and we desired to see her. God answered many prayers, and we were able to see her and be with her for several weeks.

It became a stressful month, filled with ups and downs. Each week felt like a month and time moved in the way it chooses—beyond our comprehension. We got laughs in with my mom, tears, smiles, sleep, and suffering.

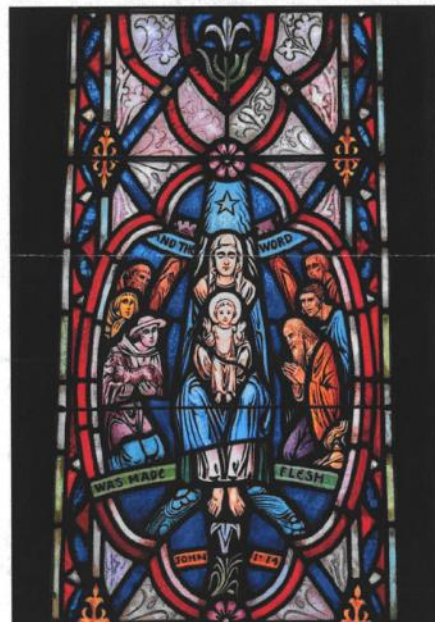
There was time to read Scripture, sing hymns, and pray. When I stop and think about it, I am amazed at how many people were praying for us and for my mom. There were people all over Ghana, the US, and other countries who were praying for my mom. It is an overpowering gift when I think of God and how He builds His church up in such powerful ways.

Many prayers were answered as we hoped, and some were not. However, all prayers were answered according to God’s good and gracious will, which we cannot understand. On an Autumn day, God called my mother to her eternal rest until Christ’s return.

I was able to be there when she breathed her last. She was not alone. God was with her. From her first breath to her last, God was with her and He is with us and with you.

My mom wrote inside the cover of one of her Bibles, “I want to master this Book, so the Master of this Book can master me.” I find inspiration from this quote. It reminds me of the power of God’s Word, which transcends time and space. It connects me to truths that have gone through the hearts of countless other people, my mother being one. God’s Word is active and powerful, sharper than any sword. May the Master of this book master me.

As I reflect on my mother’s death, I also think to several tragic deaths in the Gbintiri community that shook our hearts this year. Heartache is not something we long for, seek out, or desire. It hurts. One of my friends who died was not a Christian. He gladly accepted the audio recording of the Komba New Testament several years ago, as well as the Jesus film in Komba. He challenged me as I grew to learn the language and he would patiently sit and talk with me in market or while I passed his moto and bicycle shop. There would be times I would pass his shop after church to greet him. He would ask me what I heard in church. It challenged me to speak about Jesus and my faith in Komba.



*And the Word was made flesh.  
What hope! Jesus knew suffering like us,  
so that He could take our eternal death  
and replace it with life.  
(Picture taken from the hospital chapel.)*





We are thankful that we were able to return to be with Michael's mother before she died. While we mourn her death, we look to the bare, deathly cross and we see it transformed into new life given to us through faith in Jesus, our Savior.

It has been an Autumn we did not expect or predict. It has been filled with sickness, death, transitions, travel, and healing. November is the end of the church year. During this time, we hear in church of the end times. We lift our eyes up with the host of saints who have preceded us in this life and we pray, "Salvation belongs to our God, who sits on the throne, and to the Lamb." Rev 7:10 In December, we shift our focus to Christ's coming and the life He brings.

While in the US, I have been able to connect a few times with the translation office as we work on standardizing spellings of names in the Old Testament and check Job. I was also able to virtually attend parts of a Bible Translation conference that occurs every two years. I enjoyed these activities. They provided me with time to connect with colleagues, to learn more about the depths of God's Word, and to learn more about Bible translation work. It has been a reminder of how deeply my mom loved Bible translation and people around the world. I am reminded that my village family and the wider Komba community care about me and my family. This work and life is all a two-way street. Missions is never unidirectional.

Thank you for walking alongside us during this time. Thank you for praying for us. We all need God's unending grace and love that is poured out on the cross for us. May God hold you now and may the Master of the Book be with you.

Confident in Christ,  
Michael and Naomi Ermland

Contributions:  
Lutheran Bible Translators  
PO Box 789  
Concordia, MO 64020

Checks written to Lutheran Bible Translators with *Ersland Ministry* on the memo line. You can also give online at [LBT.org](http://LBT.org)

[Michael-Naomi.Ersland@lbt.org](mailto:Michael-Naomi.Ersland@lbt.org)  
Facebook: Ersland Updates



**Lutheran Bible Translators**

### Prayer Requests

- Praise God for the ability to see mom before she died and for the faith God gave her.
- Praise God that we are never alone.
- Pray for us as we try to team check remotely until arriving in Gbintiri.
- Pray for us as we return to Ghana in December and get back into rhythms.
- Pray for Komba churches as they gather for Christmas convention.
- How may we pray for you? Please let us know so that we may be praying for you!







**TRINITY LUTHERAN  
CHURCH &  
SCHOOL**

11503 German Church  
Road  
Burr Ridge, IL 60527

Church: (708)839-1200  
School: (708)839-1444  
Fax: (708)839-8503

Email Addresses:  
trinitylutherschool@comcast.net  
rgeaschel@tlbr.org  
adewitt@mytlsonline.com  
rgrady@tlbr.org  
rbordak@tlbr.org  
csecretary@tlbr.org  
lvasquez@tlbr.org  
heggert@tlbr.org

**OFFICE HOURS**

Church Office Hours  
Monday–Thursday 8:30am–3pm  
School Office Hours  
Monday–Friday 8am–3:30pm

In an emergency, contact  
Pastor Bob  
(708)846-4170/call or text  
Pastor Emeritus Albrecht  
(815) 293-0934 / home  
(815) 531-7590 / cell



**February Birthdays**

- 1 Vanessa Metrik  
Olivia Wittwer  
Payton Wittwer
- 2 Robert Gallegos Jr.  
Blake Lund
- 3 Andrea Vazquez  
Martha Vazquez
- 4 Louis Hruza  
Frank Mika  
Cynthia Wunglueck
- 5 Linda Bakalyar  
Nancy Bordak  
Jake Bulthuis  
William Cook Jr.  
Judy Grady
- 6 Sue Voelz
- 7 Hannah Barnett  
Patricia Hutcheson
- 8 Sandra Kozlowski  
Alexis Murphy
- 10 Jennifer Cohen  
Abigale Ernst  
Ashlyn Gasparas
- 10 Romy Richards  
David Straub
- 11 Ray Rampage  
Laurie Verba  
Nolan Ward
- 12 Madeline  
Schoenberger  
Abigail Sneath  
Kurt Ulrich
- 14 Marisa Kopping  
Elsee Young
- 15 Joyce Rotermund  
Kim Valentino
- 17 Livia Metrik  
Isaiah Rackow  
Ciara Taheri
- 19 Randy Ball  
Annabelle Owen
- 20 Rita Rafinski
- 21 Judy Jung
- 22 Michelle Bouchard  
Peter Rodzen
- 23 Ryan Murray  
23 Wyatt Schiller
- 24 Bob Bordak  
Sarah Gentile  
Danielle Gogolewski  
Emily Louis  
Marisa Melillo  
Randy Swanson
- 25 Kim Freese  
Leslie Grady  
Heidi Lehenbauer  
Katy Orrick
- 27 Deanne Kulis  
Gail Probst
- 28 Jackson Crispin  
Christina Kabel  
Joseph Kaminski  
Sharon Wendte
- 29 Dale Borchardt



**Address Updates**

Dorothy Kohutynski  
1000 Village Center Drive  
Unit 407  
Burr Ridge, IL 60527



Bo, Grace, and Juniper Clark  
10837 Chaucer Drive  
Willow Springs, IL 60480



**FEBRUARY 2022**

**Trinity Lutheran Church & School**  
 11500 German Church Road ☪ Burr Ridge, IL 60527  
 Church: 708.839.1200 ☪ School: 708.839.1444 ☪ Fax: 708.839.8503  
 For more information, go to our website: [www.tlbr.org](http://www.tlbr.org)

HC = Holy Communion; BC = Bible Class; SS = Sunday School

rev. 1/27/22

| Sunday   | Monday   | Tuesday  | Wednesday   | Thursday   | Friday   | Saturday  |
|--|--|--|---|--|--|---|
| <b>Alkar Guild:</b><br>Lisa Haak<br>Dorothy Supeter<br>Nancy Alex<br>Betty Rediehs   | <b>Ushers:</b><br>8:30 am – Group<br>10:45am – Group   | <b>1</b><br>7:00pm Basketball (G)<br>7:00pm Bible Study (CL<br>& Facebook Live)  | <b>2</b> <i>The Purification of Mary and the Presentation of Our Lord</i><br>6:30am Men's BC (CL)<br>4:30pm TLC (CR)<br>4:45pm Public School Conf. (CL)<br>6:00pm Youth Board (YR)<br>7:00pm AA (TFH) | <b>3</b> <i>2pm Dismissal</i>                                  | <b>4</b>   | <b>5</b><br>8:30am Trustees<br>11:00am Baptism Kocek<br>5:30pm Worship HC |
| <b>6</b><br>8:30am Worship HC<br>9:45am Fit for Life (CL)<br>9:45am BC & SS<br>11:00am Cont. Worship<br>11:00am Parish Ed (CL)<br>6:30pm Open Youth (YR) | <b>7</b><br>6:30pm Board of Elders (CR)<br>6:30pm School Board (CR)<br>7:00pm Adult Volleyball (G) | <b>8</b><br>7:00pm Basketball (G)  | <b>9</b><br>6:30am Men's BC (CL)<br>10:30am TLC (CR)<br>4:45pm Public School Conf. (CL)<br>7:00pm AA (TFH)  | <b>10</b><br>6:30pm Bible Class (CL)                           | <b>11</b>  | <b>12</b><br>8:30am Trustees<br>5:30pm Worship HC                         |
| <b>13</b><br>8:30am Worship<br>9:45am Fit for Life (CL)<br>9:45am BC & SS<br>11:00am Contemp HC  | <b>14</b><br>7:00pm Adult Volleyball (G)   | <b>15</b><br>7:00pm Basketball (G)<br>7:00pm Bible Study (CL<br>& Facebook Live) | <b>16</b><br>6:30am Men's BC (CL)<br>12:00pm <b>TORCH DEADLINE</b><br>4:30pm TLC (CR)<br>4:45pm Public School Conf. (CL)<br>7:00pm AA (TFH)   | <b>17</b><br>11:30am JOY Club (TFH)<br>6:30pm Stewardship (CL) | <b>18</b>  | <b>19</b><br>8:30am Trustees<br>5:30pm Worship HC                         |
| <b>20</b><br>8:30am Worship HC<br>9:45am Fit for Life (CL)<br>9:45am BC & SS<br>11:00am Cont. Worship<br>6:30pm Open Youth (YR)                          | <b>21 Presidents Day</b><br>No School – Offices Closed<br>7:00pm Adult Volleyball (G)              | <b>22</b><br>7:00pm Basketball (G)<br>7:00pm Bible Study (CL<br>& Facebook Live) | <b>23</b><br>6:30am Men's BC (CL)<br>10:30am TLC (CR)<br>Pod Day<br>4:45pm Public School Conf. (CL)<br>7:00pm AA (TFH)  | <b>24 St. Matthias, Apostle</b><br>6:30pm Bible Class (CL)     | <b>25</b>  | <b>26</b><br>8:30am Trustees<br>5:30pm Worship HC                         |
| <b>27 Transfiguration Sunday</b><br>8:30am Worship HC<br>9:45am Fit for Life (CL)<br>9:45am BC & SS<br>11:00am Contemp. HC                               | <b>28</b><br>7:00pm Adult Volleyball (G)   |  |   |  | <b>Meeting areas:</b><br><i>(shown in parenthesis)</i><br>Ch = Church<br>CR = School Conf. Room<br>CL = Church Library<br>TFH = Trinity Fellowship Hall<br>G = School Gym<br>SK = School Kitchen<br>CK = TFH Kitchen<br>SL = School Library<br>N = Narthex<br>YR = Youth Room<br>OP = Off Premises |   |