



# Creation Museum and Ark Encounter Weekend

October 5-7,  
2018

## See the Vision and Reality of this Full-Sized Ark and the Creation Museum

The Board of Parish Education is planning a weekend of discovery and intrigue as we set off to Kentucky to view the Ark and Creation Museum.

Our tour will begin early on Friday, October 5. We will charter a bus that will take us to the Creation Museum. Breakfast will be on the bus and you will be permitted to bring your own food items.

Arrival at the museum should be around 1:00 p.m. which will give you about 5 hours to tour the museum. The state-of-the-art Creation Museum allows you to venture through biblical history, stunning exhibits, botanical gardens, planetarium, petting zoo, and much, much more. More information can be viewed at [www.creationmuseum.org](http://www.creationmuseum.org).

Friday night we will have dinner together at a local restaurant. We will then head to our hotel (Hyatt Place). Our hotel includes a free continental breakfast each day.

Saturday, October 6, will bring us to The Ark. Ark Encounter features a full-sized Noah's Ark, built according to the dimension given in the Bible. Spanning 510 feet long, 85 feet wide and 51 feet high, this engineering masterpiece amazes people young and old.

Saturday night we will go out for dinner and once again return to our hotel.

Sunday morning, we will have breakfast, pack the bus, attend worship at a local Lutheran church and then head home. We should arrive back at Trinity around 7:00 p.m.

To plan this trip, we will need to know who is interested in attending. If you are interested, we will need a \$50 deposit by Sunday, December 3 to hold your spot. We are limited to only 56 people.

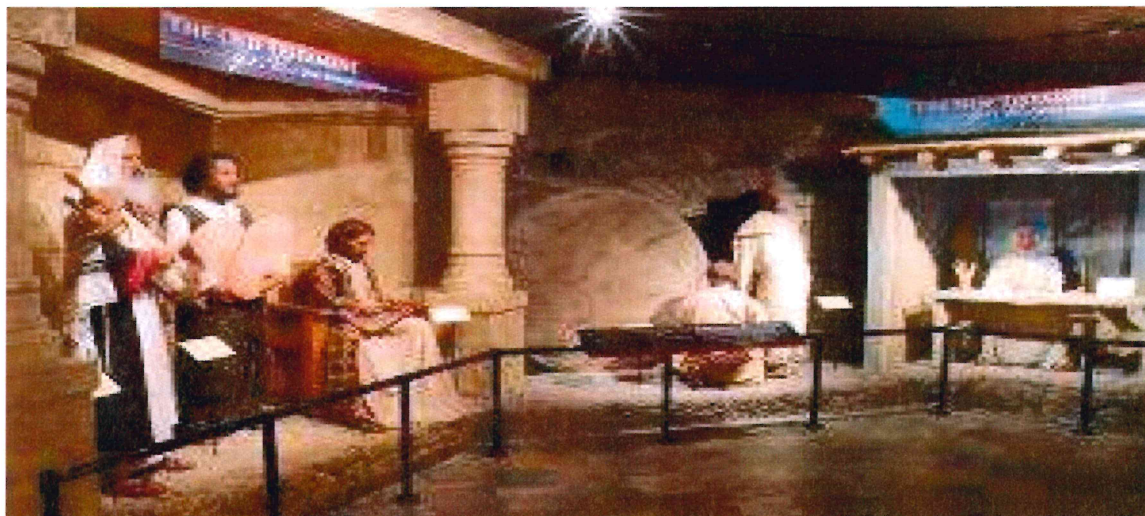
Cost are estimated as follows for transportation, meals, entrance fees and hotel:

59 and under -	60 and over -
\$425 for single occupancy	\$405
\$285 for double occupancy	\$265
\$235 for triple occupancy	\$220

**All prices include taxes. These are maximum costs and could be reduced.**

This is a great fellowship event and a potential start for future trips.

Please reach out to Rob Grady at [rgrady@tlbr.org](mailto:rgrady@tlbr.org) or Pat Cermak at [patcermack@itgtrans.com](mailto:patcermack@itgtrans.com) with any questions you may have.



Name of Participant(s) \_\_\_\_\_

Roommate preference \_\_\_\_\_

Deposit Amount \_\_\_\_\_ Check Number \_\_\_\_\_

Final Amount due from rate above \_\_\_\_\_

Phone Number \_\_\_\_\_