

# The EMPHASIS

*a Monthly Newsletter from Emmanuel Lutheran Church*

Volume 7 -- Issue 10 -- October 2017



*Here is an explanation of the 3D visual found in the Narthex:*

- Our boat is currently on dry, brown land.
- **Buy a cloud!**
- Clouds make rain puddles!
- A lot of rain makes a lake!
- The more rain, the deeper and wider the lake!
- The deeper the lake, and our Emmanuel Boat will float!
- The wider the lake, and we can travel to more places to spread the Good News!



*Since the beginning of our campaign, it appears that 13 clouds have been purchased! These clouds represent \$7375.00 toward eliminating our line of credit and roof loan! Thank you!*

## Help Float the Emmanuel Boat!

The Stewardship Mission Group would like to direct your attention to the fall Stewardship Campaign that culminates for the third consecutive year on October 29 for Miracle Sunday III. In addition to our regular pledge campaign, we have also kicked off of the **"Help Float The Emmanuel Boat"** campaign that will help us eliminate our line of credit and roof indebtedness so we can move ahead with other pivotal church projects.

You can help Float the Emmanuel Boat by purchasing a cloud!

You should have received a letter from the Stewardship Mission Group outlining the details of the overall, two-part stewardship plan – a request for you to increase your pledge to regular giving and more information about how you can help us reduce our debt. If you did not receive one in the mail, you can pick one up in the Narthex. They are labeled

### **"Miracle Sunday III—2017 Pledge Drive"**

Please give it a close read and your prayerful consideration as we accept God's challenge to vitalize our meaningful ministries.

## Emmanuel Lutheran Church

1036 W A Street, Moscow, ID 83843 - Phone: 208.882.3915 - Fax: 208.882.3917

emmanuelmoscowid@gmail.com - www.emmanuelmoscow.org

Regular Office Hours (unless otherwise noted.): Monday - Wednesday & Friday, 7 AM - 3 PM , Thursday, (Staff Coverage) 9 AM - Noon



# Welcome to Emmanuel!

Emmanuel Lutheran Church and Preschool  
is located at: 1036 W A St., Moscow, ID 83843

## Church:

Phone: 208.882.3915 - Fax: 208.882.3917  
emmanuelmoscowid@gmail.com  
www.emmanuelmoscow.org

## Preschool:

Phone: 208.882.1463 - Fax: 208.882.3917  
emmanuel Lutheran preschool@gmail.com  
www.emmanuelmoscow.org/preschool/



## Our Staff:

### Dave Daug, Pastor

509.431.2988 (call or text)  
revkddaugs@gmail.com

Office Hours: By appointment.

### CindyMarie Polley

#### Church Administrator

Church Office: 208.882.3915

Personal Cell: 509.366.0548 (call or text)  
emmanuelmoscowid@gmail.com

Regular Office Hours: M-W & F, 7AM - 3PM  
Thurs: (Staff Coverage) 9AM - 12PM

### Lisa Allen, Youth Director

208.882.3915 or 509.847.4302  
emmanuel.luthyouth@gmail.com

#### Office Hours:

Visit our google calendar at

<http://www.emmanuelmoscow.org/calendar/index.html>...  
scroll down to the ELC Youth calendar listed  
to see all youth information.

### Janet McIntosh, Music Director/Organist

208.882.3915 or 208.521.5002  
mcintosh83843@gmail.com

Office Hours: By appointment.

### Nikki Cox, Preschool Director

208.882.1463 or 208.310.6106

emmanuel Lutheran preschool@gmail.com

Office Hours: M, W, Th, 8:30 AM - 1:30 PM

# In This Month's Issue...

... Church & Staff Contacts . . . . .	2
... President's Letter & Treasurer's Report . . . . .	3
... <b>PIA!TI</b> (Praise! Awesome! Thanks!) . . . . .	4
... Birthdays & Anniversaries! . . . . .	4
... October 2017 Event Calendar . . . . .	5
... October 2017 Servant Schedule . . . . .	6
... A BATCH of OODLES... a.k.a. a little bit of everything! . . . . .	7-8
... Emmanuel Music Ministry... Serve on Church Council	
... How to Handle Greif Seminar... Dates! Deadlines!	
... Upcoming Sermon Topics... Oktoberfest with LCM	
... Emmanuel's Got Talent! ... Cameron Bazaar	
... Opportunities for Sunday's Servant Schedule	
... Guess Who's Coming to Dinner!? . . . . .	9
... Emmanuel Mission Endowment (ME) . . . . .	9
... ME Application for Funds . . . . .	10
... Ed Opps (Christian Education Opportunities) and ELCW Circles	11
... LUTH Youth! . . . . .	12
... For the KID in ALL of US! . . . . .	13
... Preschool News! . . . . .	14
... In Our Thoughts & Prayers . . . . .	15
... The Parish Paper . . . . .	17
... Lutherhaven "Camp Corner" . . . . .	19
... Welcome! to Emmanuel . . . . .	20

**Submissions to the November issue  
of the Emmanuel *Emphasis*  
are due in the Church Office  
Monday, October 23, 2017, 6 AM**

The DEADLINE for ANNUAL REPORTS is Thursday, November 2, 2017.  
Please submit them to CindyMarie in the Church Office. Thank you!

# President's Letter

Sisters and Brothers in Christ,

We have moved deeper into the Fall, the Lord is kissing the air with fresh breath, and bringing much needed rain, which we pray will help dampen the fires. Here at Emmanuel, the September Council meeting had to be postponed until September 26, but God's work has continued here unabated.

As you heard on Sunday the 17<sup>th</sup>, our Stewardship Campaign has kicked off and we will learn how God calls each of use to use our treasure, talents, and time to serve our Lord through mission and ministry at Emmanuel. As the Treasurers' Report indicates, our debt for the roof and the line of credit are high and weighing us down. This indebtedness takes general funds to service, precluding the use of those moneys to support all those ministries that are so important to God and to each of us. Our mission relies on our ordained pastor and our lay staff who bring such a rich, spiritual, and Christ-centered focus to our youth program, and indeed, to all the ministries to which we have been called. BUT foremost our mission relies on EACH OF US. It goes without saying that funding is necessary to support salaries, materials, and activities related to our ministries.

Council is discussing the ideas for continued, expanded, and new ministry that have come out of the MAP survey. There are many great ideas and Council will be setting up meetings, forums, and other opportunities for further Congregational input to these ideas (likely after the first of the year). However, getting our outstanding debt under control and paid off will be essential if we are to move forward with any new or expanded ministries. Expanding and new ministries are beyond our abilities if we cannot support our current ministries. So as you prayerfully consider your role in supporting the ministries to which we have been called by God, please consider increasing your on-going commitment to those ministries, as well as how you can contribute to our debt reduction campaign.

Our Treasurers and Finance Committee will be working with our Mission Groups to construct a budget for 2018 that we will consider at our Annual Meeting on SUNDAY, DECEMBER 3. The results of our Stewardship Campaign will be a major component going into the decisions Council will consider for next year's budget.

There are so many strong and vibrant ministries going on at Emmanuel, from our youth programs and Pre-School, to our worship and music ministries, to our Mission Endowment outreach activities, and more. It is a truly exciting time at Emmanuel, and God has so richly blessed this congregation, that it is a joy to give back to God's mission a part of the gifts that come from God.

Blessings on our farmers as they finish the harvest and prepare God's creation for another season, blessings on our students of all ages and their teachers and supporters as they continue their learning and discovery, and blessings on all of you as we work together to serve our Lord and our Lord's creation.

**Ben Beard**

Church Council President  
Emmanuel Lutheran Church

## Treasurer's Report

(August 2017)

With a 2017 budget of \$363,284, that includes the roof loan, income needs to average about \$30,300 per month to meet budget. Income from the general fund in August totaled \$24,416 and expenses were \$30,886. As a result, the operating net loss for August was \$5,770 and year to date loss is now \$28,942.

The line of credit balance remains at \$47,000.

At the April church council retreat, the council approved loans from the Saving Grace Mission account (up to \$7,000) and the Good Shepherd Fund (up to \$15,000) to provide us with the working capital we need to be able to continue to pay our bills. On July 27th we transferred \$6,000 from the Mission account fund into the bank checking account. Earlier this month, we borrowed \$6,000 from the Good Shepherd Fund.

These funds were needed to allow us to pay our bills.

The balance on the roof replacement loan today is \$43,686 and our monthly payment is \$987.

The Stewardship Mission Group introduced the fall stewardship campaign this last Sunday. The goal of the "Float the Emmanuel Boat Campaign" is to eliminate the balance on roof loan and line of credit – roughly \$80,000.

As Pastor said Sunday, there is no greater act of worship than when we share our time, talents and treasures with the Lord. Thank you for continued and generous support of Emmanuel and its vital missions.

In his work,

**Jon Kimberling**  
and **Gwen Mitchell**,  
Co-Treasurers

Emmanuel Lutheran Church



# P!A!T! - Praise! Awesome! Thanks!

Thanks to all who helped and participated in the Sunday, August 27,  
**Youth & Family sponsored Emmanuel Potluck!**

Thank you to the **Foss family** for financing the remodel of our Quiet Room located of the Sanctuary here at church. Funds were acquired through a car the Foss' gifted to Emmanuel and was sold in our vehicle donation program.

*Thank you for your valuable gift!*

Thank you to **Emmanuel Youth Director, Lisa Allen**, and **Preschool Director, Nikki Cox!** These ladies have been working hard to update, clean, and refresh our Quiet Room upstairs in the Sanctuary. Nikki and Lisa have given this highly used room a fresh coat of paint, traded old furniture for new, scrubbed EVERYTHING from top to bottom, inside and out! If you haven't had the chance, you should go take a look at the beautiful job they have done!

Thank you!

Thank you, **Janice Johnson** and **ELCW** for the creative Back-to-School gifts given to the Preschool Staff and myself as we begin another exciting year of Emmanuel Lutheran Preschool! CindyMarie

Dear **Emmanuel Lutheran**,

Thank you for your support of the Campus Christian Center. Our Welcome Back BBQ was a success thanks to your leadership, donations, and assistance. Thanks especially to **Tom Stroschein** who served as our Brat Master and is a skilled grillsmen. Together we are striving to connect students with Jesus Christ. Blessings in the Lord, Dawn Beamish  
Campus Christian Center, Director

Thank you to **Youth & Family** for hosting the Sunday, September 17, Wheat Bouquet making during Fellowship Hour, and thanks to **Kim Campbell** for providing the wheat supplies for this fun event!

**Vern Kinnison** was in my office and mentioned now that it was raining he was looking for things around church to do since he was running out of lawn and garden work with the changing of the season. I said he could fix my office door! A week ago it decided that it didn't want to open unless you went on the other side of the door and gave it a good smack. The very next day, Vern showed up with a bunch of wood working tools, and he fixed the door, good as new! **Thank you Vern!** You are so willing to help with anything you are asked of, and so generous of your time! – CindyMarie

Thank you, **Vern Kinnison**, for the attention you gave to the broken door leading to the downstairs hallway from the front entryway. Although the door is supposed to stay open if given a firm but gentle push, it is not really reliable. It was bent and would not close. Vern disassembled it, straightened the bent rod, and reassembled the door hardware. **Thanks again, Vern**, for the love and care you give to our church home.

Thank you to the **Stewardship Mission Group** and **CindyMarie** for all the great thought and hard work put in to this year's Stewardship Pledge Drive and Float the Emmanuel Boat campaign! And thanks for the purchase of 13 clouds so far!



- Oct. 2 - **Bob Carver**
- Oct. 4 - **Charlene Olsson**
- Oct. 5 - **Janet Williams**
- **Marci Wood**
- Oct. 9 - **Phyllis Vettrus**
- Oct. 10 - **Steve Nelson**
- **Swaanije Schwarzlaender**
- Oct. 11 - **Peter Beard**
- Oct. 12 - **Chris Watts**
- Oct. 13 - **Mike Sprenger**
- Oct. 14 - **Jack Beard**
- Oct. 15 - **Jake Kirchmeier**
- Oct. 19 - **Tomas Lawrence**
- Oct. 24 - **Yolanda Wyatt**
- Oct. 25 - **Katy Beard**
- Oct. 29 - **Robert Peterson**
- **Trinity Wood**



**Nancy & Jim Derringer**  
10/01/1988

**Ron Landeck & Debby Wyatt**  
10/06/1990

**Michael & Teresa Beard**  
10/07/2012

**Karl & Kristin Johnson**  
10/07/2000

**Mark & Marijka Schwarzlaender**  
10/09/2008

**Steve & Andrea Fountain**  
10/28/1972

# OCTOBER

Sun	Mon	Tue	Wed	Thu	Fri	Sat
<b>1</b> <b>Seventeenth Sunday after Pentecost</b> 8:30am Adult Sunday School (Hall) 9:30am Worship Service 11:00am Fellowship (Hall)	<b>2</b> <i>Pastor Off</i> <i>Youth Director Office Hours</i> 9:00am Preschool Music with Tina 1:30pm MARY Circle (Good Samaritan) 7:00pm Hog Heaven Band (Hall)	<b>3</b> <i>Youth Director Office Hours</i> 9:00am Preschool Fire Drill 9:30am Preschool Music with Tina 11:30am LEAH Circle 5:30pm Church Cleaning Scheduled	<b>4</b> <i>Youth Director Office Hours</i> 6:00am Weekly Publication Deadline 9:00am Preschool Firefighter visit 5:30pm Choir Rehearsal 7:15pm Adult Bells	<b>5</b> <i>Cindy Marie Out of the Office</i> NO Preschool	<b>6</b> No Preschool	<b>7</b> 8:00am Church Cleaning Scheduled
<b>8</b> <b>Eighteenth Sunday after Pentecost</b> 8:30am Adult Sunday School (Hall) 9:30am Worship Service 11:00am Fellowship (Hall)	<b>9</b> Columbus Day <i>Pastor Off</i> <i>Youth Director Office Hours</i> 7:00pm Hog Heaven Band (Hall)	<b>10</b> <i>Youth Director Office Hours</i> 5:30pm Church Cleaning Scheduled	<b>11</b> <i>Youth Director Office Hours</i> 6:00am Weekly Publication Deadline 7:00am Men's Breakfast (The Breakfast Club) 9:00am ELCW Piecemakers (Hall) 4:00pm Executive Council Meeting 5:30pm Choir Rehearsal 7:15pm Adult Bells	<b>12</b> <i>Cindy Marie Out of the Office</i>	<b>13</b>	<b>14</b> 8:00am Church Cleaning Scheduled
<b>15</b> <b>Nineteenth Sunday after Pentecost</b> <b>Quilt Blessing Sunday</b> <b>Youth Sunday</b> 8:30am Adult Sunday School (Hall) 9:30am Worship Service 11:00am Fellowship (Hall)	<b>16</b> <i>Pastor Off</i> <i>Youth Director Office Hours</i> 7:00pm Hog Heaven Band (Hall)	<b>17</b> <i>Youth Director Office Hours</i> 5:30pm Church Cleaning Scheduled 5:30pm Church Council Meeting (Hall)	<b>18</b> 6:00am Weekly Publication Deadline 5:30pm Choir Rehearsal 7:15pm Adult Bells	<b>19</b> <i>Cindy Marie Out of the Office</i>	<b>20</b> <i>Youth Director Office Hours</i> 6:30pm Emmanuel's Got Talent! - Talent Show	<b>21</b> 8:00am Church Cleaning Scheduled 5:00pm Cameron Lutheran Church Bazaar
<b>22</b> <b>Twentieth Sunday after Pentecost</b> <b>Preschool Sunday</b> 8:30am Adult Sunday School (Hall) 9:30am Worship Service 11:00am Fellowship (Hall) Pumpkin Carving sponsored by Youth & Family	<b>23</b> <b>DEADLINE: November Emphasis</b> <i>Pastor Off</i> <i>Youth Director Office Hours</i> 7:00pm Hog Heaven Band (Hall)	<b>24</b> <i>Youth Director Office Hours</i> 5:30pm Church Cleaning Scheduled	<b>25</b> 6:00am Weekly Publication Deadline 7:00am Men's Breakfast (The Breakfast Club) 9:00am ELCW Piecemakers (Hall) 5:30pm Choir Rehearsal 7:15pm Adult Bells	<b>26</b> <i>Cindy Marie Out of the Office</i> 7:00pm Preschool Board Meeting	<b>27</b> <i>Cindy Marie Out of the Office</i> <i>Youth Director Office Hours</i>	<b>28</b> 8:00am Church Cleaning Scheduled
<b>29</b> <b>Reformation Sunday</b> <b>Miracle Sunday</b> 8:30am Adult Sunday School (Hall) 9:30am Worship Service 11:00am Fellowship (Hall)	<b>30</b> <i>Pastor Off</i> <i>Youth Director Office Hours</i> 7:00pm Hog Heaven Band (Hall)	<b>31</b> <b>Reformation Day</b> <b>Halloween</b> <i>Youth Director Office Hours</i> 5:30pm Church Cleaning Scheduled	<b>Notes:</b> <hr/> <hr/> <hr/> <hr/> <hr/> <hr/>			



# OCTOBER 2017

## Servant Schedule

<u>Serving on:</u>	October 1	October 8	October 15 Youth Sunday Quilt Blessing	October 22 Preschool Sunday	October 29 Miracle Sunday Reformation Sunday
<u>Ministers:</u>	The Congregation	The Congregation	The Congregation	The Congregation	The Congregation
<u>Presiding:</u>	Pastor Daugs	Pastor Daugs	Pastor Daugs	Pastor Daugs	Pastor Daugs
<u>Dir. Of Music/Organist:</u>	Janet McIntosh	Janet McIntosh	Janet McIntosh	Janet McIntosh	Janet McIntosh
<u>Altar Guild / Bread:</u>	JoDee Brooker	JoDee Brooker	NA	JoDee Brooker	JoDee Brooker
<u>Acolyte:</u>	Connor Perry	Abby Cox	NA	Connor Perry	Cooper Cox
<u>Altar Flowers:</u>	Elaina Perry	Noell Swearingen	Deb & Kas Dumroese	Noell Swearingen	<i>SERVANT NEEDED</i>
<u>Assisting Minister:</u>	Ben Beard	Debbie Stone	NA	Gwen Sullivan	Kris Daugs
<u>Communion Assistants:</u>	Gwen Mitchell	Tara Roberts	NA	Julie Spangler	Gwen Mitchell
	Deb Dumroese	Deb Dumroese	NA	Nancy Sasser	Nancy Sasser
<u>Counters:</u>	Gwen Mitchell	<i>SERVANT NEEDED</i>	Gwen Mitchell	Carolyn Todd	Gwen Mitchell
	Vern Kinnison	<i>SERVANT NEEDED</i>	Tammy Greenwalt	Julie Spangler	Tammy Greenwalt
<u>Fellowship:</u>	Paul & Kathy Kwiatkowski	Deb & Brian Marsh	Kevin & Anne Peterson	Bob & Sue Ritter	Mark S & Marijka H
	Ron Landeck & Deb Wyatt	Jan Martin	Nancy Ruth Peterson	Tara & Tim Roberts	Debbie Stone
	Larry & Carol Lass	Marilyn & Jack Mastro	Marge Remington	Garth & Nancy Sasser	Janet & Mandy Strey
	Roger & Gen Long	Steve & Carol Nelson	<i>SERVANT NEEDED</i>	Carmen Savage	Gwen Sullivan
<u>Greeters:</u>	Janice & Irv Johnson	Noell Swearingen	NA	Noell Swearingen	<i>SERVANT NEEDED</i>
<u>J.A.M. Leader:</u>	Lisa Bender	Chie Baker	Deb Marsh	Carolyn Todd	<i>SERVANT NEEDED</i>
<u>J.A.M. Assistant:</u>	Gretchen Isakson	Janet Williams	Deb Wyatt	Julie Spangler	Robbie Giles
<u>Quiet Room Attendant:</u>	Janet McIntosh	Nikki Cox	<i>SERVANT NEEDED</i>	Elaina Perry	<i>SERVANT NEEDED</i>
<u>Reader:</u>	Kas Dumroese	Debbie Stone	NA	Nancy Sasser	Gwen Sullivan
<u>Ushers:</u>	Vern Kinnison	Vern Kinnison	Vern Kinnison	Vern Kinnison	Vern Kinnison
	Todd Perry	Josh Cox	Kas Dumroese	Todd Perry	Kas Dumroese
	Jake Perry	Tim Roberts	Pat Blaufuss	Jake Perry	Deb Dumroese
	<i>SERVANT NEEDED</i>	Kas Dumroese	<i>SERVANT NEEDED</i>	Pat Blaufuss	Pat Blaufuss
	<i>SERVANT NEEDED</i>	<i>SERVANT NEEDED</i>	<i>SERVANT NEEDED</i>	<i>SERVANT NEEDED</i>	<i>SERVANT NEEDED</i>

**Thank you for your Service!**

# A BATCH of OODLES... *...a.k.a. A Little Bit of Everything*

## Come Make Music With Us!

Join the music ministry of Emmanuel! We have several opportunities for sharing your musical gifts and would love to have you join us! The Adult Choir rehearses on Wednesdays at 5:30 PM and the Adult Bells on Wednesdays at 7:15 PM. Both groups meet in the sanctuary by the piano. We also have opportunities for our youth to participate in music at Emmanuel with a Children's Choir and a bell group for youth! Questions?



Call **Janet McIntosh**  
208.882.3915 or  
208.521.5002 or email  
mcintosh83843@gmail.com

**Please come join us as we worship through music!**

## Now is your chance!

Would you like to serve on Church Council?  
We will elect four people on December 3! Interested?

### Want to know more?

Contact one of the following individuals:

**Tom Stroschein** at 509.330.1137  
or [toms@moscow.com](mailto:toms@moscow.com)

**Jolene Halladay** at 208.301.8130  
or [jhalladay@alumni.uidaho.edu](mailto:jhalladay@alumni.uidaho.edu)

**Steve Fountain** at 208.301.2199

## DATES! DEADLINES!

- ⇒ **Deadline for submissions to the November issue of the *Emmanuel Emphasis* are due by Monday, October 23, 6 AM.**
- ⇒ **Deadline for Annual Reports is Thursday, November 2, 6 AM.**
- ⇒ **The deadline for submissions to the December issue of the *Emmanuel Emphasis* are due by Monday, November 20, 6 AM.**
- ⇒ **The 2017 Annual Congregational Meeting has been changed to December 3, 2017, 11 AM.**

**COMING SOON!**

## How to Handle Greif

Pastor Bill Voris, former Interim Pastor of Quincy Lutheran Church and personal friend of Pastor Daus and Gretchen Isakson, will be here for a 4-hour seminar on how to handle grief.

The seminar will be held on **Saturday, November 4, 2017, 9 AM - 1 PM.**

Lunch will be provided.

**Call Gretchen Isakson for more details.** 208.882.7289.

*There is no charge for this seminar.*

## EMMANUEL REGULAR CHURCH OFFICE HOURS!

**Mon, Tue, Wed & Fri, 7 AM - 3 PM, Thur, (Staff Coverage) 9 AM - Noon.**

Please call the church at 208.882.3915 to hear on the voice mail message when the office may be closed during posted office hours.

*For immediate help, call or text Pastor or CindyMarie via their personal cell phone.*

*Pastor: 509.431.2988 or CindyMarie: 509.366.0548.*

**LOOK** ing ahead...

**...Upcoming Sermon Topics!**

October 1, 2017

17<sup>th</sup> Sunday after Pentecost

**Sermon Title:**

***The Tiny Ship was Tossed!***

Readings: Acts 27:33-44;  
Matthew 21:23-32

October 8, 2017

18<sup>th</sup> Sunday after Pentecost

**Sermon Title:**

***What do you have.***

Readings: Isaiah 5:1-7;  
Matthew 14:13-21

October 15, 2017

19<sup>th</sup> Sunday after Pentecost

Youth Sunday

Quilt Blessing Sunday

**Sermon Title:**

***The Lord is MY shepherd.***

Readings: Isaiah 25:1-9; Psalm 23; Matthew 22:1-14

October 22, 2017

20<sup>th</sup> Sunday after Pentecost

Preschool Sunday

**Sermon Title:**

***Change. Become Like Children.***

Readings: Isaiah 45:1-7;  
Matthew 18:1-5

October 29, 2017

Reformation Sunday

Miracle Sunday

**Sermon Title: 95 THESIS**

Readings: Jeremiah 31:31-34;  
Psalm 46; John 8:31-36



# MORE! A BATCH of OODLES...

*...a.k.a. A Little Bit of Everything*

## OPPORTUNITIES ABOUND!!!

The October Servant Schedule could still use some help! Here is a great opportunity to try your hand at a new skill! To stretch a comfort zone! To serve the Lord in a new way!

Contact CindyMarie in the Church Office if you would like to sign up for a Sunday in October... or November... or the 1<sup>st</sup> & 3<sup>rd</sup> Sunday of every month... any time really...to **Read Scripture**, help **usher**, assist with **Communion**, **acolyte**, **greet** people, bring **flowers** for the Altar, **assist** our worship leader, any servant help listed on the schedule! Call: 208.882.3915 or email [emmanuelmoscowid@gmail.com](mailto:emmanuelmoscowid@gmail.com)

Thank You!

CAMERON BAZAAR

## Annual Turkey Dinner

- Dinner Served 5:00—7:00 p.m.
- Auction Following
- Entertainment while waiting for auction
- Proceeds support local & world charities

**Cameron Emmanuel  
Lutheran Church  
12633 Cameron Road, Kendrick**

**Saturday, October 21**

Located 4 miles east of Kendrick off of Southwick Road

**Adults \$10.00**  
**Children 6-12 \$ 5.00**  
**Under Six Free**

Activities for Children during Auction

# Emmanuel's Got Talent!

**Lutherhaven  
Scholarship Fundraiser  
Get your ticket\$!**



**Friday, October 20, 6:30pm**  
**Emmanuel Lutheran Church Fellowship Hall**

Dust off that hidden talent! Show us your stuff! Don't be shy! **You can be a STAR!** And, we can use your help recruiting others who may be interested in performing. We are seeking talent from ALL ages! Contact Lisa Allen, Emmanuel's Youth Director, to sign up!

## Oktoberfest 2017

Benefitting **Lutheran Campus Ministry**  
at the University of Idaho



**October 21, 2017 4-6 pm**  
**1912 Center Great Room 412 East 3<sup>rd</sup> Street, Moscow, ID**

- Bratwurst, sauerkraut, other sides and desserts
- German beer and wine for purchase
- Live music by Auf Gehts, dancing, silent auction, and other fun!

Adults - \$15 (Students \$10)  
Child (12 & under) - \$7 • Child (0-3) - free

*A Place for Everything, Everything In Its Place! After using the Fellowship Hall, please put tables and chairs back to the Standard Fellowship Hall Set-Up. There are diagrams of this Set-Up posted on the walls. Thank you !*





**Saturday  
November 4  
6 PM**

This casual dinner event  
is a great way to become  
better acquainted with  
fellow church members!



- Hosts provide the main dish but won't know who their guests will be until the doorbell rings.
- Guests are assigned a side dish or dessert but won't know who their host is until arriving at the assigned address.

To join the fun, fill out the form below and place in the offering plate or return to the Church Office **by Sunday, Oct 29.**

Name: \_\_\_\_\_

Email: \_\_\_\_\_

Phone: \_\_\_\_\_

My group/family includes \_\_\_\_ adults and \_\_\_\_ kids under 10.

Food/Pet Allergies: \_\_\_\_\_

**Choose one:**

☐ **I would like to be a host.**

I can seat \_\_\_\_ people at my table.

My address is: \_\_\_\_\_

☐ **I would like to be a guest.**

## EMMANUEL MISSION ENDOWMENT

The Emmanuel Mission Endowment is a fund established to manage designated and non-designated gifts intended to provide an ongoing benefit for the ministry of the church and her mission work.

The Mission Endowment is a standing Committee of the ELC Council. The assets of the Emmanuel Mission Endowment are owned by the Emmanuel Lutheran Church of Moscow, Idaho.

The Mission Endowment Committee is responsible for all Mission Endowment leadership and management activities. Its major objectives are to encourage, accept, acknowledge, invest, and make distributions from the Mission Endowment at the direction and approval of the Council and congregation.

The Committee works with other standing committees, Council, and the congregation to identify, screen, and recommend mission work and projects that may receive funding as directed by the congregation.

**On All Saint's Sunday, November 5 2017,  
the Emmanuel Congregation:**

- joins together for a Potluck Celebration during Fellowship Hour;
- votes on which Mission groups will be awarded financial support, and;
- honors a specific person, or persons, who are outstanding in their contributions to Emmanuel's mission and ministries.

## GIVING MONEY FOR MISSION!

Mission Endowment gives away 5% of the endowment every year to non-profit organizations that YOU nominate.

Nomination forms are now available in the bridge and on the church website (<http://www.emmanuelmoscow.org/mission-work/mission-endowment.html>), AND on page 18 of this *Emphasis*!

**Nomination Forms are due in the church office by  
October 15.**

Voting for who gets how much will be on  
All Saints' Sunday, November 5, 2017!

**Reminder!!!** Mission Endowment Nomination Forms  
are due in the church office by October 15.



# Application for Funds\*

2017 Mission Endowment Celebration  
on All Saints' Day, November 5  
Emmanuel Lutheran Church Mission Endowment  
*Completed forms due in the church office Sunday, October 15*

Person(s) submitting application: \_\_\_\_\_

Phone: \_\_\_\_\_ E-mail: \_\_\_\_\_

Amount requested: \$\_\_\_\_\_ **Minimum** required: \$\_\_\_\_\_

Is this a Local, Regional, or International Project? \_\_\_\_\_

Name of non-profit organization: \_\_\_\_\_

Project description: \_\_\_\_\_

Explain how this project furthers the mission of Emmanuel Lutheran Church:

Has this organization been supported by Emmanuel Lutheran Church in the past? \_\_\_\_\_

If yes, list the level and duration of support: \_\_\_\_\_

How will this project be evaluated and who will report back to the congregation the impact of the project?

Name and address where the check should be sent: \_\_\_\_\_

\*Consider checking the national Lutheran Church website (ELCA.org) for non-profits associated with the Lutheran Church. These organizations require very little overhead and more funding goes toward mission.



# Ed Opps



## i.e. Christian Education Opportunities



**Adult Sunday School!** Join Pastor Daugs, at 8:30 AM, in the Fellowship Hall. Our study is from the book of Matthew! **Join us!**

### Prayer Pieces in The Gallery

This is a group that joins together in prayer, fellowship, and conversation, while they knit, crochet, and cross-stitch. The group will reconvene **IF** there is an interest to continue. Please contact **Carol Nelson** at [cjnelson@lcsc.edu](mailto:cjnelson@lcsc.edu) if you are interested in participating!



### J.A.M. - Jesus and Me! for children through age 12.

Following the Children's Sermon, J.A.M. leaders will escort the kiddos down to the Fellowship Hall for crafts, games, songs, and a snack. Children will return to the Sanctuary just prior to Holy Communion.



### The "Old Dudes!" Wednesdays at 7 AM.

This is a group of Emmanuel Men that meet weekly on the 2<sup>nd</sup> & 4<sup>th</sup> Wednesdays. Come on October 11 & 25, 7 AM, to the Breakfast Club for breakfast and devotions. Following breakfast, the men head to church for a work day. On all the other Wednesdays, 7 AM, meet for coffee at the Moscow Co-op. Questions? Contact CindyMarie in the Church Office. 208.882.3915



**Thanks to the following Dudes for leading devotions!**

October 11 - **Pastor Daugs**  
October 25 - **Richard Clauss**  
November 8 - **Larry Lass**  
November 22 - **Steve Fountain**  
December 13 - **Pastor Daugs**

### ELCW PIECEMAKERS QUILTING GROUP

Help us quilt! Bring a friend! Have some lunch! We **USUALLY** meet on the 2<sup>nd</sup> and 4<sup>th</sup> Wednesdays.

Join us on **October 11 & 25, at 9 AM**, to help tie quilts, then share a potluck lunch. Questions? Contact **Gretchen Isakson** (208.882.7289 or [gretchenisakson@yahoo.com](mailto:gretchenisakson@yahoo.com))



*"Whatever your hands find to do,  
do it with all your might."  
Ecclesiastes 9:10*

**MARY Circle!** This group usually meets the 1<sup>st</sup> Monday of the month. In October, they will meet on Monday, October 2, 1:30 PM, at Good Samaritan Village Community Room. Questions? Contact **Shelley Dale** (208.882.9555 or [sdale@turbonet.com](mailto:sdale@turbonet.com))



**LEAH Circle!** This group usually meets the 1<sup>st</sup> Tuesday of the month at 11:30 AM. All women are warmly invited to meet for devotions and a potluck lunch on Tuesday, October 3, 11:30 AM, at **Martha Hunt's** home. Bible Study Leader: **Janice Brandal**. Questions? Contact **Jeanette Johnston** (208.892.9549), or **Charlene Olsson** (208.882.1028).



**All are welcome!**

*Are you interested in starting a Circle  
or Small Group Bible Study?  
Talk to our Parish Education  
Church Council Liaison, Julia Keleher for ideas and help!*



# LUTH Youth

The Youth of Emmanuel finished off their summer with some fun play days at the park. We met weekly throughout the month of August, and ended with a wet and wild water day. It was great to see each other again and hear about everyone's summer vacations.

School is in full swing for everyone as September rolls along. The youth are happily filling their schedules with school, sports, music, and church activities. Confirmation classes resumed for several middle school/high schoolers, as they prepare to be confirmed in November. A group of upper elementary/middle school kids also began taking confirmation classes with Pastor and plan to continue throughout the fall.

The Luth Youth had a reunion on a Friday evening, full of fun and games, and of course pizza. They really enjoyed being back together again! The Mighty Youth had an afternoon playday. It's fun to see how they have all grown, as well as invite new friends from the preschool to join in!

Looking ahead, the youth have a busy October. There'll be a youth led church service Oct 15th, with a special guest Lauren Bender who will help lead us in worship and song. Lauren, daughter to Lisa and Don Bender, is a long time member of Emmanuel and now serves as Program Coordinator at Camp Lutherhaven.

The Youth will also be hosting the first annual Emmanuel's Got Talent show on October 20th. This will be an amazing night of kids sharing their many talents, as well as opening up the show to any adults who want to join in and show off their talents. Tickets for this event will be sold at the door, and all proceeds will go to help send these kids to Camp Lutherhaven in the summer.

Lisa Allen  
Youth Director

Questions about Emmanuel's Youth Program?  
Contact our Youth Director, Lisa Allen.  
208.882.3915 or 509.847.4302 or  
emmanuel.luthyouth@gmail.com



Luth  
Youth  
REUNION

9/22/17

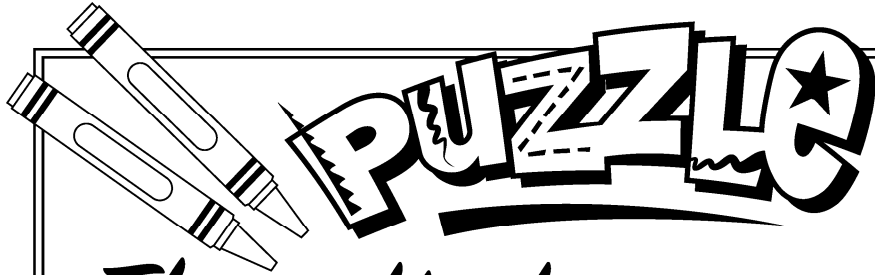


Mighty  
Youth  
PlayDay!  
9/26/17





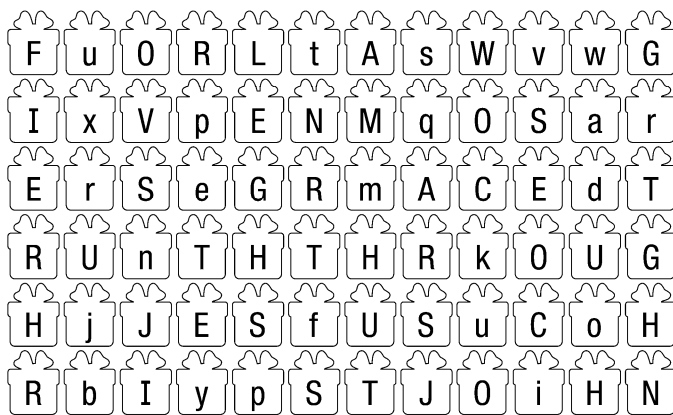
For the KID in ALL OF US !



## The gift of grace

God's grace is a free gift, not something we can earn on our own. How do we have this gift?

*Directions: Complete the Bible verse by placing the capital letters from the gifts on the blanks below.*



" \_\_\_\_\_ the \_\_\_\_\_ was \_\_\_\_\_  
 through \_\_\_\_\_ ; \_\_\_\_\_ and  
 \_\_\_\_\_ came \_\_\_\_\_  
 \_\_\_\_\_."  
 \_\_\_\_\_ 1:17, NIV

## Sign of grace

Make this sign to hang on your wall as a daily reminder of God's amazing gift of grace.

### What you need:

- White poster board
- Large wooden letters that spell GRACE
- Painter's tape
- Tempura paint
- Paper plates
- Paintbrushes
- Colored pens or markers

### What you do:

1. Place the poster board on the ground (outside, if possible).
2. Put tape on the back of the letters and secure them to the board. No tape should be visible.
3. Paint and draw all over the poster board. Be creative with splatters, handprints and so on.
4. When paint is dry, remove the letters and hang up the poster.

Answer: "For the law was given through Moses; grace and truth came through Jesus Christ." John 1:17, NIV



# Preschool NEWS!

We are up and running, and have lots of new families with us this year at Emmanuel Lutheran Preschool! We currently have full classes in the 3 year old morning sessions and the MWF 4 year old session. There are still openings in our afternoon class (combination of 3 and 4 year olds), as well as, our T/TH 4 year old morning session. Please help spread the word. On Thursday, September 15<sup>th</sup>, was our annual ice cream social. It was a great time!

Coming up is our first preschool Sunday on October 22nd. The students will be singing during worship and are always welcome to join us for JAM following the children's lesson. If you are willing to offer additional assistance for JAM on this day, it would be appreciated. Please contact Deb Marsh.

Thanks for all of your support and prayers as another school year begins!

#### Additional Ways to Support

- Would you like to be a volunteer reader? We are looking for volunteers who would like to spend about 30-45 minutes weekly with the kids. Please call Nikki at 208-882-1463 or email at [emmanuelutheranpreschool@gmail.com](mailto:emmanuelutheranpreschool@gmail.com) for further information or to sign up.
- When scholarships funds are available, the board typically approves 40% of tuition costs. A student attending 3 days a week has a tuition charge of \$750 per semester, so their scholarship would be \$300 per semester, or a total of \$600 per year. If you would like to donate to the scholarship fund at any time, these families are very appreciative of the support, and many could not attend preschool without this additional financial support.
- Do you have an old car taking up space in your driveway? We are accepting donations of your used car, pickup, or ATV to raise funds for our preschool kids. Any vehicle you donate, you can donate all or part of its sale. Please contact Steve Fountain, Craig Greenwalt, Pastor Daugs, or the Church Office for more information. Thank you for the donations we have already received! It has helped pay for our playground, storage shed, and updating the quiet room.

**Nikki Cox**, Preschool Director



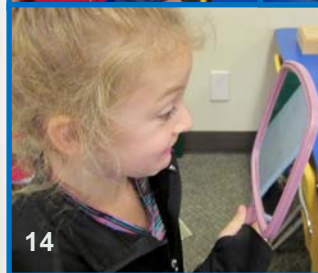
**Thanks for joining us  
at the ice cream social!  
We had a great time!**



#### The pleasure of books!



#### Learning about feeling week!





# In Our Thoughts & Prayers

- **The churches' ongoing ministries of care** for the hungry and neglected, especially in Zimbabwe, China, Darfur, Ethiopia.
- **Military service people from our families serving:** Steven Kwiatkowski, serving in Okinawa Japan; John M. Swanson & Evan B. Marten, grandsons of Maureen Marten; Jaren Doherty Jr., Clara Dockter's grandson; serving with the Marines in Afghanistan.
- **Victims of war, oppression, injustice, and cruelty.**
- **People and organizations working for justice and peace.**
- **Any people we have come to see as our enemies.**
- **All those living in fearful homes and circumstances.**
- **All those who are victims of natural disasters.**

## Those with special needs:

- **The Castro Family**, prayers for families of Mexico, Janet Strey.
- That **Candi & Brittney** find guidance and prayer from God, from **Janet Strey**.
- **Susen Porter**, Jeanette Peterson's niece and Kevin Peterson's cousin, diagnosed with Primary Progressive Aphasia.
- **Phyllis & Dean Vettrus**, as Dean recovers from surgery.
- **Pastor Daus and family**, as Pastor recovers from open heart surgery on June 14.
- **Janet McIntosh**, recovering from knee replacement surgery on June 20.
- **Vivian Fountain**, Carol & Steve Nelson's granddaughter, diagnosed with mild cerebral palsy.
- Baby **Thomas Harner**, continuing his fight with leukemia.
- **Gwen Sullivan's son and his family.**
- **Douglas Dion**, Edith's son, suffering from congestive heart failure.
- **Randy Dion**, Edith's son, recovering from a paralyzing stroke.

- **Students and members abroad.**
- **Our sister churches:** Grace Lutheran Church - New Orleans; Ulanga-Kilombero Synod - Tanzania.
- **Those who've lost loved ones.**
- **Prayers of Thanksgiving.**

## Those, dealing with cancer:

- **Janet Williams sister's stepdaughter**, dealing with aggressive breast cancer;
- **Landon Hill and family**, friends of Phyllis Vettrus; 2 <sup>1/2</sup> year old Landon has been diagnosed with cancer; **Richard Woock**, Jessie Weller's uncle suffering with bone cancer;

*Please help us as we update our prayer list. If you wish to make a prayer request or update an existing one, please call the church office at 208.882.3915, or email [emmanuelmoscowid@gmail.com](mailto:emmanuelmoscowid@gmail.com).  
Thank you.*



## Those who have requested our continued prayers:

- **Matt Foss.**
- **Andy Fountain.**
- **Sandra Lytle.**
- **Fukuko Garrett**, Janet Williams' mother.
- **Mike Voegtler**, Katy Beard's cousin.
- **Rosanne Manley.**
- **Yolanda Wyatt.**
- **Mike Sprenger.**
- **Dorothy Schnaible.**
- **Devin Revard**, Clara Dockter's grandson.
- **Carol Nelson's Aunt Dorothy.**
- **Clara Dockter**, continued strength.
- **Brien Golis and Family**, cousin of the Streys, whose son is battling a horrible disease.
- **Mark Strey**, Mandy's dad, who is struggling with health issues and alcohol.
- **Sue**, Julia Keleher's mother, in hospice care.
- **Carl Hunt**, suffering from cluster headaches.
- **Doris Edgar**, Julie Spangler's mother, suffering from lewdy body dementia.
- **Sara Kimberling**, continued healing.
- **Bob Bennett**. Prayers for healing.
- **Janet Strey's father**, that he finds Jesus in his life.
- **Grace Lyon**, living at Whitman Senior Care in Pullman.
- **Ken Strassburg**, Kathy Kwiatkowski's brother.
- For strong community & welcoming in the **Lutheran Campus Ministry.**
- **Patients of the Lugala Hospital** in Tanzania.
- **Residents of Good Samaritan Nursing and Special Care units.**

## Notes:

The Prayers & Concerns Sheet is updated every few months by church staff. If a prayer request has been removed and you wish to keep it on the list please contact us with an update! If you wish to make a prayer request or update an existing one, please contact the church office at 208.882.3915, or [emmanuelmoscowid@gmail.com](mailto:emmanuelmoscowid@gmail.com). Thank you.



# THE PARISH PAPER

IDEAS AND INSIGHTS FOR ACTIVE CONGREGATIONS

EDITOR: CYNTHIA WOOLEVER—WWW.THEPARISHPAPER.COM

October 2017—Volume 25, Number 10

Copyright © 2017 by Dana Horrell

## SHORT-TERM MISSION TRIPS THAT YIELD LONG-TERM SUCCESS

Reporting on the popularity of short-term mission trips, sociologist Robert Wuthnow estimates that in the US, 32 percent of congregations sponsor short-term overseas volunteer trips every year. About a quarter of the US population has taken part in a short-term mission experience at some point in their lifetime.<sup>1</sup> In fact, the prospect of embarking on a short-term mission trip, fueled by well-resourced, energetic people of faith, can be exhilarating for both participants and the community being served. Still, despite the best intentions, such trips often fall short of expectations for all involved.

### Worst Mission Trip Ever: A Case Study

Moments after the ten-passenger van arrived in the Central American village of San Valente, Jenna pulled out her camera to photograph the dozens of patchwork buildings made of corrugated metal, plastic, and wood. Matt said, "Wow! This reminds me of last year, when we were in Mexico." Scott, the trip's coordinator, asked the group to help hand out the goods to community residents that would arrive via truck that afternoon.

This mission trip's purpose was to lay the foundation for a new community church. The mission trip leader sent money in advance to hire someone to dig the foundation trenches. However, when the group arrived at the work site, they were shocked because the trenches were only half-finished. Miguel, their host, explained the reason: They preferred to hire local workers with hand tools, not a single person with heavy machinery, so that more people would be employed. "Looks like it's going to be a long week!" Jenna exclaimed.

While this story is fictional, it contains instructive examples of misguided actions.<sup>2</sup>

- Before Jenna reaches for her camera, she and the other missionaries should be advised to get to know their hosts, and gain an understanding of what it is like to live there. Otherwise, the trip—whether to El Salvador or inner city Detroit—becomes voyeuristic or like a tourist destination.

- Matt's memory of last year's Mexican mission trip highlights that, while changing destinations every year can be enjoyable, the best way to develop a lasting relationship is to make a long-term commitment to one community and return each year.
- The coordinator's plan to hand out supplies from the back of a pickup truck can be an offensive practice, as it reinforces a pattern of top-down paternalism. Instead, give the items to a local service agency or congregation to distribute.
- The expressions of shock over a half-finished trench remind us that missionaries need to respect that they have now entered their hosts' world. Logistics and timelines need to proceed under local direction.

### Best Practices for Effective Mission Trips

Laurie Occhipinti, an anthropologist who researches economic development, has spoken with missionaries, read scholarly articles and religious leaders' accounts, and participated in trips herself. With this background,



Eastern Washington-Idaho Synod's purchase of a subscription to *The Parish Paper* INCLUDES permission for each congregation within our jurisdiction to (a) photocopy or electronically distribute for local use as many copies as it needs, (b) post them on its website, and (c) quote sentences and paragraphs.



she offers best practices to ensure that short-term mission efforts are effective.<sup>3</sup>

*Establish Long-Term Relationships.* The here today, gone tomorrow quality of many short-term mission trips begs the question: How are we not simply religious tourists? Long-term connection through repeated visits can change the relationship quality between sender and host, assisting team members in deepening their local cultural understanding and allowing those who have made multiple trips to help newcomers learn what to expect and how to behave. Repeated visits also increase the likelihood that local community members will have input into the projects undertaken.

*Reflect on the Experience.* Orientation and debriefing sessions should be mandatory for groups undertaking short-term projects. These sessions work if everyone provides input. Newcomers should be encouraged to talk aloud about their preconceptions about the trip and the culture. At the final debriefing, group discussions provide an important opportunity to frame the social, cultural, and political contextualization of the encounter.

*Work to Ensure the Project Benefits the Community.* Good mission trips often resemble successful community development projects undertaken closer to home. This involves practicing good listening skills with local leaders; focusing on resources, not deficits; and considering how the project could enhance community sustainability five or more years down the road. Such steps ensure that the host community, and not just the mission team, receives lasting benefits.

*Understand the Role of Culture.* Occhipinti notes that mission participants often “collapse cultural differences” by lumping the poor in other countries with the poor everywhere else, disregarding cultural variances. Time invested in learning about the local culture, perhaps even learning language basics, is time well spent.

*Work in Partnership.* “The question is not *whether* we travel and work with others; the question is *how*.” In other words, the *process* of working with others matters as much as the project’s material output. Unfortunately, Christian mission history is tainted by missionaries’ collusion with colonial governments and institutions seeking to extract resource wealth from colonial territories. Only by continually stressing *partnership* in the project’s planning and execution can both sides of the mission equation—missioners and hosts—learn from each other.

## Where Should We Go?

When initiating a short-term mission trip, the most important decision may be the first: where should we go? Here are two possibilities for finding that answer.<sup>4</sup>

*Personal Connection.* This occurs because a church leader learns about the host community through a friend or business colleague. In one case, a professional woman started a nonprofit agency after learning about the poor living near a Nicaraguan landfill while on vacation. Her home church stepped up to support her with funds and additional support through mission trips. If you choose to rely on a personal contact, do your homework. Contact a nonprofit development organization with contacts in the region you plan to visit, or talk with someone in your denominational mission office.

*Institutional Connection.* If your congregation is part of a larger denomination with global reach, denominational staff may have institutional ties with nongovernmental agencies in the host region or country. One advantage: the denominational office may be able to help with logistical arrangements as well.

So which is better? Personal connections may appear more direct and less bureaucratic, yet a potential downside is the “side-of-the-road syndrome.” Occhipinti describes it this way: Everybody loves the mission site that lies on the beaten path, while the greater need may lie just inland from there. For example, Juarez, Mexico, located just across the border from El Paso, Texas, receives many American mission teams, while more remote locations receive hardly any at all.

## Reflecting on Meaningful Mission

Do mission trips do any good, or are they simply faith-based tourism masquerading as meaningful engagement? When handled effectively, such trips can help missioners from a dominant culture challenge long-held assumptions. Immersion in another culture, especially in a less developed country, cracks open cultural assumptions, as if a fish, always accustomed to immersion in water, suddenly became aware of its surroundings. Such experiences can be transformative.<sup>5</sup>

1. Laurie Occhipinti, *Making a Difference in A Globalized World: Short-term Missions that Work* (Lanham, MD: Rowman and Littlefield, 2014), 13-14.

2. Mark Radecke, “Misguided Missions: Ten Worst Practices,” *Christian Century*, May 18, 2010, 22-23, 25.

3. Occhipinti, 117-21.

4. *Ibid.*, 95-96.

5. *Ibid.*, 34-38.





Lutherhaven Ministries is your congregation's year-round outdoor ministry. We're Camp Lutherhaven on Lake Coeur d'Alene, Shoshone Mountain Retreat & Ranch up the North Fork of the Coeur d'Alene River, Idaho Servant Adventures, and week-long Lutherhaven Day Camps held in communities around the Northwest. The Camp Corner features news and happenings at Lutherhaven.

***Did you know? 2017 marked our 71st year offering quality, safe, Christ-centered programs for campers of every age!***

**Here are a few things coming up at camp:**

**Fall Golden Ager's Day Out - October 3**

- Join us for a terrific day at the Cataldo Mission in Idaho!
- A one day retreat for older adult groups, retirees & senior adults.
- Enjoy a fabulous boxed lunch, great friends & plenty of laughs.

**4th Annual Boots & Pearls Hootenanny - October 7**

- An evening of fun & generosity supporting the Lutherhaven Campership Fund!
- Live music, wine & beer tasting, delicious dinner & a paddle raise to support camp.
- Contact Kristi Rietze for sponsorship & ticket information, [kristi@lutherhaven.com](mailto:kristi@lutherhaven.com).

**Fall Cut, Crop, & Quilt - October 20-22**

- Amazingly popular get-together for the "crafty" in all of us!
- Bring you favorite crafting, quilting or scrapbook project and create with new & old camp friends!
- Come a day or two early to get a jump start on your weekend.

**Deck the Halls Family Retreat - December 1-3**

- Make Christmas at Lutherhaven your new family tradition!
- Crafts, wreaths, wooden toys, carols, hot chocolate, cider & all the trimmings!
- Get unplugged and outdoors with significant family, friends, & mentors.

**Questions?**

**Call:** 208-667-3459 x 113

**Email:** [registrar@lutherhaven.com](mailto:registrar@lutherhaven.com)  
[www.lutherhaven.com/events](http://www.lutherhaven.com/events)

## Deck the Halls

**at Lutherhaven  
December 1 - December 3**



**Family memories, laughter, joy, creativity, friends, relationships, traditions, and faith!**

Deck the Halls at Lutherhaven is one of our best and most popular events! Come with your houseful or bring along another family (or several!) and share the joy of the season! Cookies, crafts, wreaths, wooden toys, carols, crackling fires, twinkling lights, hot chocolate, cider, and all the trimmings of Christmas!

**Weekend Information**

**COST:**

\$120 Adults & Teens

\$85 Youth 4-12 years old

Children under 4 are FREE!

*Includes 4 great family meals, cozy lodging, crackling fires, snacks and all materials.*

**ARRIVAL: FRIDAY, Dec. 1**

**5:00 – 7:00 PM** Registration

**8:00 PM** Official Kickoff & Devotion

*\*NO Supper Friday evening. Dessert WILL be served.*

**DEPARTURE: SUNDAY, Dec. 3**

**9:30 AM** Brunch

**10:30 AM** Worship

**\*Registration Closes Friday  
November 24th**

**Note:** Register up to 7 days prior to an event. \$50 non-refundable deposit required with registration.

**Please complete your food allergies form as part of your registration at least 10 days prior to your arrival.**



# Welcome!

## Emmanuel Lutheran Church



Evangelical Lutheran  
Church in America



## Join us!

Sunday mornings:

Parish Education - 8:00AM  
Worship Service - 9:30AM  
and Fellowship - 11:00AM

**Emmanuel is a community of faith** celebrating the life of Jesus Christ in, among and for us all. Our mission is to proclaim God's loving care through ministries of worship, serving, learning and compassionate living for others.

**Music** is integral to Emmanuel's life and worship. There are adult and children choirs, adult and children bell choirs, guitarists, cellists and ensembles involved in our life together.

**Emmanuel highlights and celebrates** seasons and commemorations throughout the year with children's programs, special services, music, soup and bread meals, potlucks, coffee hours, outings, etc.

**Companionship** is central to our life together here and with people far and near whose lives are connected to ours through Christ's call and leading. Many hundreds of quilts have been sewn and sent abroad, and many thousands of dollars have been given for food, books, scholarships, medical supplies and many other needed items.

**Emmanuel Lutheran Church Women (ELCW)** encompasses women of the congregation and friends, meeting in groups monthly for Christian education, prayer, companionship, service to missions and to host joint annual gatherings.

**Youth groups** including confirmation classes, camps and family outings provide fun and fellowship for Emmanuel's children.

### Emmanuel Ministers to the Community

**Emmanuel Lutheran Preschool** serves children from 3-6 years old. Morning and afternoon classes are available. Families select the schedule of days. Email: [emmanuel Lutheran preschool@gmail.com](mailto:emmanuel Lutheran preschool@gmail.com)

**Lutheran Campus Ministry at the U of I** is housed in The Center. Karla Newmann-Smiley, Lutheran Campus Minister, provides programs and services to college students. Email: [lcm@uidaho.edu](mailto:lcm@uidaho.edu)

**Cordelia Lutheran Church** is owned by Emmanuel and maintained by Friends of Cordelia. Historic Cordelia Lutheran Church is Idaho's oldest and smallest Lutheran church. Cordelia is available for concerts, weddings, visits, and meditation. Email: [cordeliachurch@gmail.com](mailto:cordeliachurch@gmail.com)

### For Your Convenience:

- Parking is available near both levels of the church. Upper level parking is on the north side and lower level is on the south side.
- Main restrooms are located on the lower level.
- An elevator is located near the sanctuary entrance.
- There is a child care room adjacent to the sanctuary and includes a restroom.
- Hearing devices, reading glasses, large print bulletins and children's worship activity bags are available at the upper entrance.

*Come serve along side us.*

*Come study, learn, discuss and  
grow with us.*

