

There is a \$100 registration fee for all mission trip participants, which counts toward the final cost.

Trip Coordinator:

Jono Mueller

Next Generation Leader

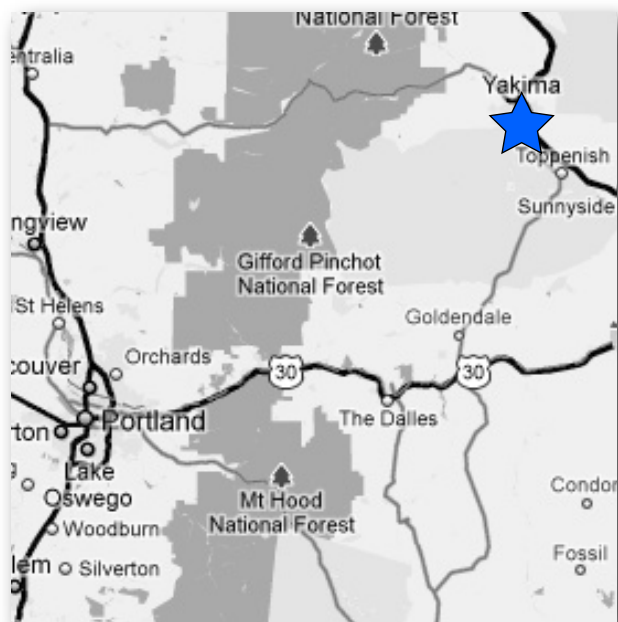
[www.epikoschurch.com](http://www.epikoschurch.com)

[Jono@epikoschurch.com](mailto:Jono@epikoschurch.com)

360-608-2993

#### Facts:

- There are over 5000 wild horses on the Yakama Native American Reservation.
- It takes approximately three hours to get to Yakima from Vancouver.



## Registration

Participant

Name:.....

Address:.....

Age:.....

Grade:.....

Have you ever participated in a mission trip before?

Yes

No

Parent / Guardian

Name:.....

Contact Number:.....

Email:.....

Signed:.....

By signing you grant your child permission to attend the Epikos Youth Mission Trip.

#### Parent information:

This registration form signs your child up for the Mission Trip. There will be more forms that will be given out in a mission trip packet. **Please submit the \$100 registration fee with this form.**

Please contact Jono Mueller at [Jono@epikoschurch.com](mailto:Jono@epikoschurch.com) if you have any questions.



# EPIKOS YOUTH MISSION TRIP

Registration and Information Packet  
Yakama Native American Reservation

June 24-29, 2012



# Information

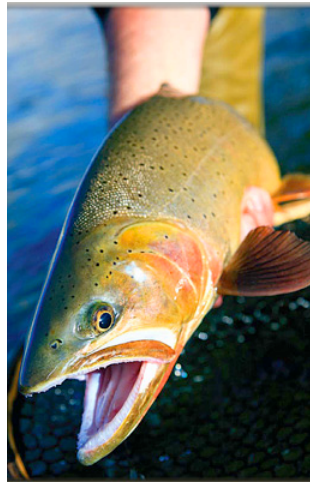
## What to expect

Mission trips have a great impact not only for the people we serve, but for all participants. You can expect to have a life-changing and memorable experience that you will never forget! On this year's trip we will immerse in the culture as visitors on the Yakama Native American Reservation near Yakima, WA.



The Yakama Reservation lies along the eastern slopes of the Cascade Mountain Range and the Yakima River in south-central Washington. There are fourteen tribes and bands that make up the Yakama Nation. More than 10,500 people are enrolled in the Yakama confederation of tribes, and there are more than 14,000 people living on or close to the 1.2 million acre reservation.

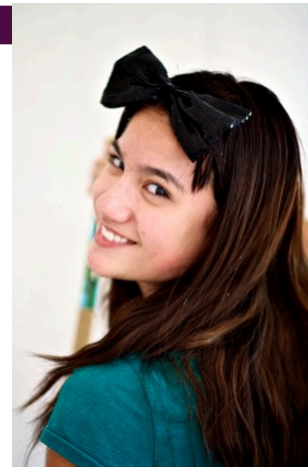
The Yakama language is called Ichishkiin, and it consists of several different dialects that are spoken by the 14 tribes as well as other tribes in the Northwest such as the Warm Springs people in Oregon and the Nez Perce in Idaho.



## What to bring

You will require only a few things for your trip:

- Sleeping bag
- Clothes
- Pillow
- Toiletries
- Hammer
- Bible
- Work pouch
- Towel
- Money for snacks
- Camp chair



Be ready to experience something great!  
We will get to learn about the tribe in a way that most groups don't get to experience!

## General

The mission team will depart on Sunday, June 24, and we will return on Friday, June 29.

The mission trip will involve a variety of work / light construction tasks including painting, building, cleaning and some community service projects.

The mission trip offers a complete cultural experience. On the trip you will experience Native American culture in a way that you otherwise would not. We will share a traditional meal with a local family and also learn about the history of the tribe.

## Cost

The total cost for this year's trip is estimated to be no more than **\$425** per person.

The goal is to fundraise the amount for the trip, however if fundraising does not cover all of the cost the remainder will be the responsibility of the mission trip participant.



## Fundraising expectation

It is expected that all mission trip participants take part in the fundraising events for the trip. This includes:

- Letter writing
- Car washes
- Bake sales
- Yard sales

To opt out of fundraising will require you to pay the full amount for the mission trip, \$425.