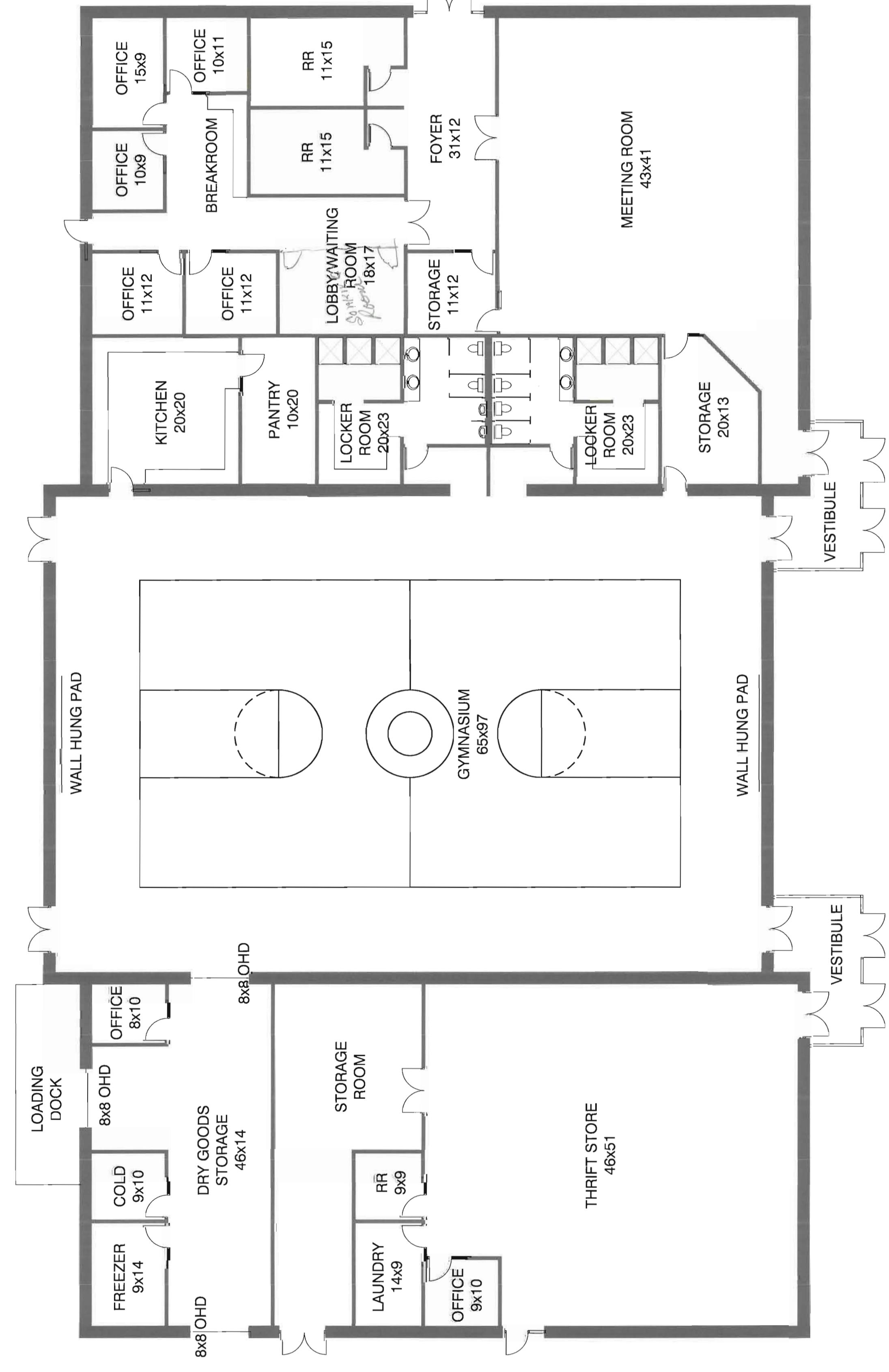


R. MESSNER CONSTRUCTION  
 2822 NORTH CHERRY, SUITE 800  
 WICHITA, KANSAS 67208  
 PH (316) 634-1332 FAX (316) 634-1418  
 WWW.RMESSNERCONSTRUCTION.COM  
 THE DRAWING PLAN DESIGN SHALL  
 BE CONSIDERED VOID WITHOUT  
 THE SIGNATURE AND SEAL OF THE  
 ARCHITECT AND SHALL BE THE PROPERTY  
 OF R. MESSNER CONSTRUCTION. IT IS  
 THE POLICY OF R. MESSNER CONSTRUCTION  
 TO PROTECT THE PROJECT FOR WHICH  
 IT HAS MADE SUBSTANTIAL INVESTMENT  
 AND TO MAINTAIN THE INTEGRITY OF THE  
 PROJECT. ANY REVISIONS TO THIS  
 DRAWING SHALL BE MADE BY THE  
 ARCHITECT OR AN AUTHORIZED REPRESENTATIVE  
 OF R. MESSNER CONSTRUCTION. ANY  
 REVISIONS TO THIS DRAWING SHALL BE  
 MADE BY THE ARCHITECT OR AN AUTHORIZED  
 REPRESENTATIVE OF R. MESSNER CONSTRUCTION.

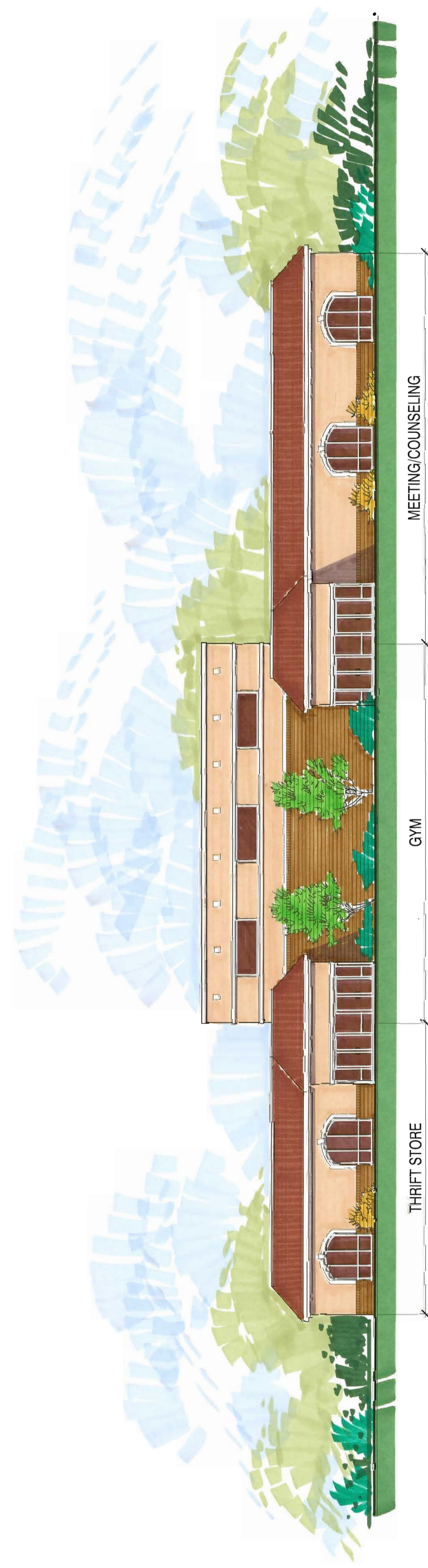
**R. MESSNER CONSTRUCTION**  
**TULARE, CALIFORNIA**

COMMUNITY CENTER  
 TULARE, CALIFORNIA

JOB NO.: SK-1877  
 ISSUE DATES:  
 REVISIONS:  
 NO. DATE  
 REVISIONS:  
 NO. DATE  
 PAGE TITLE  
**PRELIMINARY FLOOR PLAN**  
 SHEET  
**A1.1**



**PRELIMINARY FIRST FLOOR PLAN**  
 18,612 SQ. FT.  
 3/32" = 1'-0"



**PRELIMINARY ELEVATION**  
 3/32" = 1'-0"