

# The Saltire



ST. ANDREW'S  
EPISCOPAL CHURCH

*December 2011*

## Rector's Reflections

Blaise Pascal was a 17<sup>th</sup> century French Christian philosopher. He is best known for what is often referred to as "Pascal's wager." It's a line of argument that appears in a footnote in one of his books and goes like this: Even if the existence of God cannot be proven with reason and logic, a rational person should nonetheless "wager," or risk, belief in God because if God does exist and the story of our salvation is true, then we have everything to gain and nothing to lose.

The season of Advent cannot be approached with reason only. Preparing our hearts for the birth of Christ requires a suspension of disbelief. God come to earth in human form? The Messiah born in a manger? It is an outrageous, even absurd story, and yet as the magic and mystery of this season comes upon us we are left with one persistent question knocking on the door of our hearts: What if it's true?

Advent is a time for opening that door, for answering that question, for wagering belief in the promise of the incarnation. Of course, there is so much else that occupies our minds and hearts in this time of year – the shopping and decorating, the pageants and parties, the joy of gathering with family and the sorrow of loved ones lost – but beneath it all remains that eternal question, and God patiently awaits our answer. We have everything to gain and nothing to lose.

Faithfully,  
John Rohrs

## Sr. Warden's Letter

Can you believe it? We are still in the afterglow of the Flower Festival when all of the sudden, boom, it's Advent!

We have jumped from the bustle, beauty, and precision of our 19th Flower Festival to the controlled chaos of Christmas Pageant rehearsals with precious little angels and well-armed, clanking, noisy, bath robed shepherds. The collage of gladiolas, lilies and dangling okra have disappeared from the Sanctuary, replaced by elegant purple and accompanied by solemn music announcing our preparation for celebration of Christ's birth.

For the next several weeks, we will all be so wrapped up in a whirlwind of obligations and commitments and gift buying, that it is easy to overlook the *essence* of the season.

Penny and I gave an Advent calendar to our 4 year old niece recently and hope to sit down with her soon and open at least a few of the windows with her. What a great way for all of us to take a moment each day, ignore all of the advertisements and incessant shopping center carols, and calmly open a panel on our own Advent Calendar, allowing us to consider the approaching miracle and reminding ourselves of all the gifts we have all received.

God's Peace!  
Don Lewis

PS: Get your flu shots!

**Mark your calendar!** For the biggest Birthday Party in town on February 3, 2012 at the Norfolk Yacht Club at 6:30 p.m. when we will celebrate our 100<sup>th</sup> Anniversary. Look for more details in your weekly bulletin, January SALTIRE and on our web site.

## Christmas Flowers/Greenery Orders Due by Sunday, December 18

It's time to place your orders for Christmas Flowers/Greenery. To donate greens/flowers in memory or in honor of loved ones, please make your check payable to "St. Andrew's Church" for \$10 per name. Please print the information on the form note "Christmas Flowers" on your check and put it in the offering plate or mail it to the parish office. Plants will remain in the church through New Year's Day.

*Flowers/Greenery given to the Glory of God and in loving memory of*

---

*in honor of*

---

**Given by (please include telephone number in case of questions)**

\_\_\_\_\_ please use full Christian names only (i.e. in honor/memory of Mary Jane Jones or Henry Albert Brown)

**Women of St. Andrew's:** After all the trimmings and trappings of the upcoming holidays have been packed away and the chilly winds are blowing, think about a winter Game Day with the Women of St. Andrew's. Look for details to come in the January Saltire and plan to be a part of the fun and friendship.

## From the 2011 Flower Festival Village Bakery

The Village Bakery would like to thank the many volunteers who helped prepare the delicious food items for sale (this was our best year ever). A special thank you to Steve Blevins for the delicious Brunswick stew he made.

## Stewardship 2012 Report – We're Almost There!

As of our mid-November press time, we had received 126 pledges for a total of \$297,924, which represents 91.7% of our pledge goal of \$325,000! A big THANK YOU to everyone who has returned a pledge card! However, there are still folks we haven't heard from!

We value everyone's gifts of "time, talent, and treasure" throughout the year, but at this time, when the finance committee and Vestry are working hard to prepare a balanced budget for the coming year, we ask especially for a financial pledge. Pledges and other contributions provide the majority of our income, funding our day-to-day ministry and programs. Your pledge is both a demonstration of your commitment to St. Andrew's and a very practical aid in preparing the budget. THANK YOU! (If you've lost your pledge card, the office has plenty more!)

## Feasibility Study Update

Thanks to everyone who completed the survey questionnaire regarding a possible capital campaign for St. Andrew's! We appreciate you contributing your time and thoughts at this critical juncture. At this point, we are awaiting the results of the survey: a feasibility report that will tell us whether the congregation supports the idea of a capital campaign, the projects that the congregation considers to be the top priorities, and the amount of money a capital campaign would likely generate. Thank you for your participation, and stay tuned for the results!

## Outreach Ministry

Ghent Area Ministry (GAM), a non-profit outreach ministry, is dedicated to helping those in need in the Norfolk community by addressing economic, social and spiritual needs. The goal of GAM is to offer a hand up, not a hand-out.

GAM began assisting those in need in Norfolk in August 2000 as an outreach of neighboring congregations in Ghent who desired to meet the needs of the poor, distressed, and homeless who approached them with frequency. Centralizing the services under one name and direction resulted in the formation of GAM. Martha Gorman is the director.

Our supporting congregations are: Central Baptist, Christ & St. Luke's Episcopal, Christ the Redeemer Anglican, Colonial Avenue United Methodist, CrossRoads Church, Epworth United Methodist, First Lutheran Norfolk, First Presbyterian Norfolk, Freemason Street Baptist, Ghent United Methodist, Larchmont United Methodist, Ohef Sholom Temple, Sacred Heart Catholic, St. Andrew's Episcopal, St. Mark RZUA, St. Paul's Episcopal, Trinity Presbyterian and Unitarian Norfolk.

Volunteer Opportunities at Ghent Area Ministry:

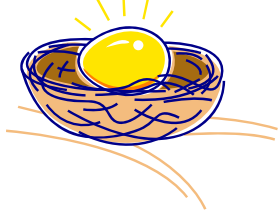
Receptionist  
Answering Phones  
Computer Data Input  
Coat Closet – sorting and tagging clothes, assisting clients  
Food Pantry – sorting, assisting clients  
Light Yard Maintenance  
Fundraising

Donation Opportunities  
Clothing for Men and Women-new and gently-used,  
New socks and underwear  
General Office Supplies  
Travel size toiletries  
Bag Lunch supplies (juice boxes, nabs, canned meat, granola bars, fruit cups, and gallon zip-lock bags)  
General funding for programs

Ghent Area Ministry is located at 4000 Colley Avenue, Suite 3. Phone: 622-0438

If you would like more information about Ghent Area Ministry please contact Robin Kruger, GAM representative for St. Andrew's. Thank you!

## NEST -- an outreach opportunity



The Norfolk Emergency Shelter Team is a coalition of some 30 churches and synagogues (and EVMS) that collectively provide shelter, meals and other necessities during the winter months to the homeless in Norfolk. Actually, to make the program work, there are bused-in sites/churches as far away as Chesapeake!

Each organization is assigned a week, running from Wednesday night to the following Wednesday morning and the week currently confirmed for St Andrew's is **29 Feb – 6 March**. We still await the confirmation of the additional week we work together with EVMS at our site. Obviously, our site will continue to be White Hall. Accordingly, it is a bare-bones operation of a single mat and blanket, a warm/hearty supper, and secure and warm evening, a minimal (although it does not have to be) breakfast and then our guests are out the door by 7AM, daily.

It requires more than a hundred volunteers to make this happen, controlling, checking-in, cooking feeding, setting up, monitoring movement, providing conversation, standing night watches and managing the shelter. On a sign-up sheet available in September, there were but 20 individual names. As a goal during this Centennial (means 100) Year, we ought to have 100% of the parish involved in at least one out-reach event. NEST is hands-on...NEST is local...NEST can be uncomfortable for some...NEST can also be rewarding, but regardless NEST and St Andrew's need your help.

In addition to the sign up list, there will be face-to-face request for help, you will hear of our needs in congregational announcements, or you may get a dreaded phone call (like stewardship) in order for us to round out our roster.

As many recall, we also provide a ditty bag of items and also when there are sufficient numbers, hats and gloves. We DID NOT have sufficient number of the latter last year. Stay tuned for more details on specific needs....there are some items like razors and soap where we have sufficient for the next 4-5 years. So we will be so bold to ask for specific items. Also, since VA is site of so many Civil War battles, we will again revive the practice of "...buying out your enlistment..." through contributions for purchases of cereal, OJ, gloves, the \$750 cleaning team cost and other necessities to support our guests.

We await your excited and vigorous support to St Andrew's and to the less fortunate....we will only wait so long and then we will elicit!!!

*Jim Rhodes and George Utter (2 old grumpy volunteers)*

## Adult Forum

### The Word Became Flesh

Dec 4– *The Christmas Story: Legend, Myth, Reality or Faith* with The Rev. Charles Riddle  
Dec 11– *The Christmas Story: Legend, Myth, Reality or Faith* with The Rev. Charles Riddle  
Dec 18 – All Parish: "The First Noel" White Hall

## Youth Program

### Youth Group (EYC)

- Have your kids and their friends RSVP'd for our 2012 ski trip yet? We're going to Wintergreen/Nelson County VA from January 13th to 15th. We'll be teaming up with Good Shepherd and Mission of the Holy Spirit. Sign up now to make sure a place is available. Grades 6th-12 welcome. Cost is \$130.
- Sunday, December 4th: Youth Group at church, 5:30-7:30.
- Sunday, December 11th: Youth Serve from 1:30-3:30. Grades 6th-12 meet at church to deliver stockings to home-bound church members. Adult/Parent volunteers needed to help with delivery.

### Sunday School (Christian Formation)

- December 4th: Sunday School 9:00-10:00am. After 10:15 service please attend the special St. Nicholas activity.
- December 11th: Sunday School 9:00-10:00am.
- December 18th: First Noel Movie from 9:00-10:00am for all ages.

## CHRISTMAS PAGEANT 2011

**December 24th**

**4:00 p.m.**

### ROLES:

Baby Jesus, Mary, Joseph, Gabriel,  
Innkeeper, King Herod, Wise Men,  
Big Angels, Scribes, Shepherds,  
Little Angels and Youth Choir

### BRIEF MEETING & COSTUME DISTRIBUTION:

December 4th

Following the 10:15 a.m. church service

### REHEARSALS:

December 11th & 18th

Following the 10:15 a.m. church service (lunch will be provided)

### QUESTIONS:

Amber Pickrell

627-9258

[pickrell3@cox.net](mailto:pickrell3@cox.net)

**SIGN UP ON THE CHRISTIAN EDUCATION  
BULLETIN BOARD OUTSIDE WHITE HALL.**

*St. Andrew's Episcopal Church*

1004 Graydon Ave

Office: 1009 W. Princess Anne Road

Norfolk, VA 23507

*"Blessings from Heaven since 1911 – celebrating 100 years"*

**Vestry 2011**

Don Lewis, **Senior Warden**

Ted Dey, **Junior Warden**

Charlotte Zito, **Register**

Jim Affeldt

Jerry Butler

Tim Coyle

Lois Gail Davis

Elizabeth Evans

Robin Kruger

Jay Lassiter

Karen Mitchell

Dean Rogis

Becky Ruffin

Deane Sobol

KK West

*St. Andrew's is a parish of worship, spiritual growth, acceptance and healing centered in the Eucharist. We reach beyond ourselves, striving to allow God to work through our hands as Christ's own. In our role as stewards of God's gifts we embrace a comprehensive concept of stewardship as central to our ministry. As a place of hope for all people, we celebrate with joy through grace our oneness in Christ.*

**Saint Andrew's SALTIRE**

The monthly newsletter of St. Andrew's Episcopal Church in Norfolk, Virginia

Phone 757-622-5530

Fax 757-622-0812

Email: [dsipes.stacc@verizon.net](mailto:dsipes.stacc@verizon.net)

[www.standrewsnorfolk.org](http://www.standrewsnorfolk.org)

The Rt. Rev. Herman Hollerith, Bishop of the Diocese of Southern Virginia

The Reverend John Rohrs, Rector

The Reverend Sam Williams, Deacon

Larry Brett, Treasurer

Dennis Sipes, Parish Administrator

Dr. James Kosnik, Organist/Choir Dir

Richard Rigg, Youth Choir Dir

Jamie Lefferd, Nursery Coordinator

Elizabeth Harris, Nursery Assistant

Josh Stephens, Youth Leader

JonMichel Sipes, Sexton

Steve Blevins & George Utter, Assistants to the Treasurer

## St. Andrew's Centennial Steering Committee

### Celebrating 100 years of St. Andrew's Church

The Centennial Steering Committee can make your Christmas shopping easy! You can pick up some great gifts and support our centennial by purchasing our commemorative products. We have coffee mugs, tote bags, and polo shirts, all with the new St. Andrew's logo, as well as Christmas ornaments. We'll be getting more of the aprons you may have seen some of the servers wearing at the Flower Festival luncheon. We're very excited about the original painting of St. Andrew's donated by noted Yorktown artist Nancy Thomas to commemorate our 100th anniversary (check it out on her web site at [www.nancythomasgallery.blogspot.com](http://www.nancythomasgallery.blogspot.com)) and we have a few more signed, limited edition prints made from the painting that are still available for \$100. If you're not familiar with her work, these "prints" are actually colorful wooden plaques in a metal frame. To purchase any of these items or place an order for one of the prints, stop by the Centennial table during coffee hour, visit the Church Mouse or contact Penny Lewis at [dwlpl@cox.net](mailto:dwlpl@cox.net) or 857-6817. And, don't forget to place your order for *The Fisherman's Church: A History of St. Andrew's Episcopal Church*. Order forms are available on the information table in White Hall or in the church office.