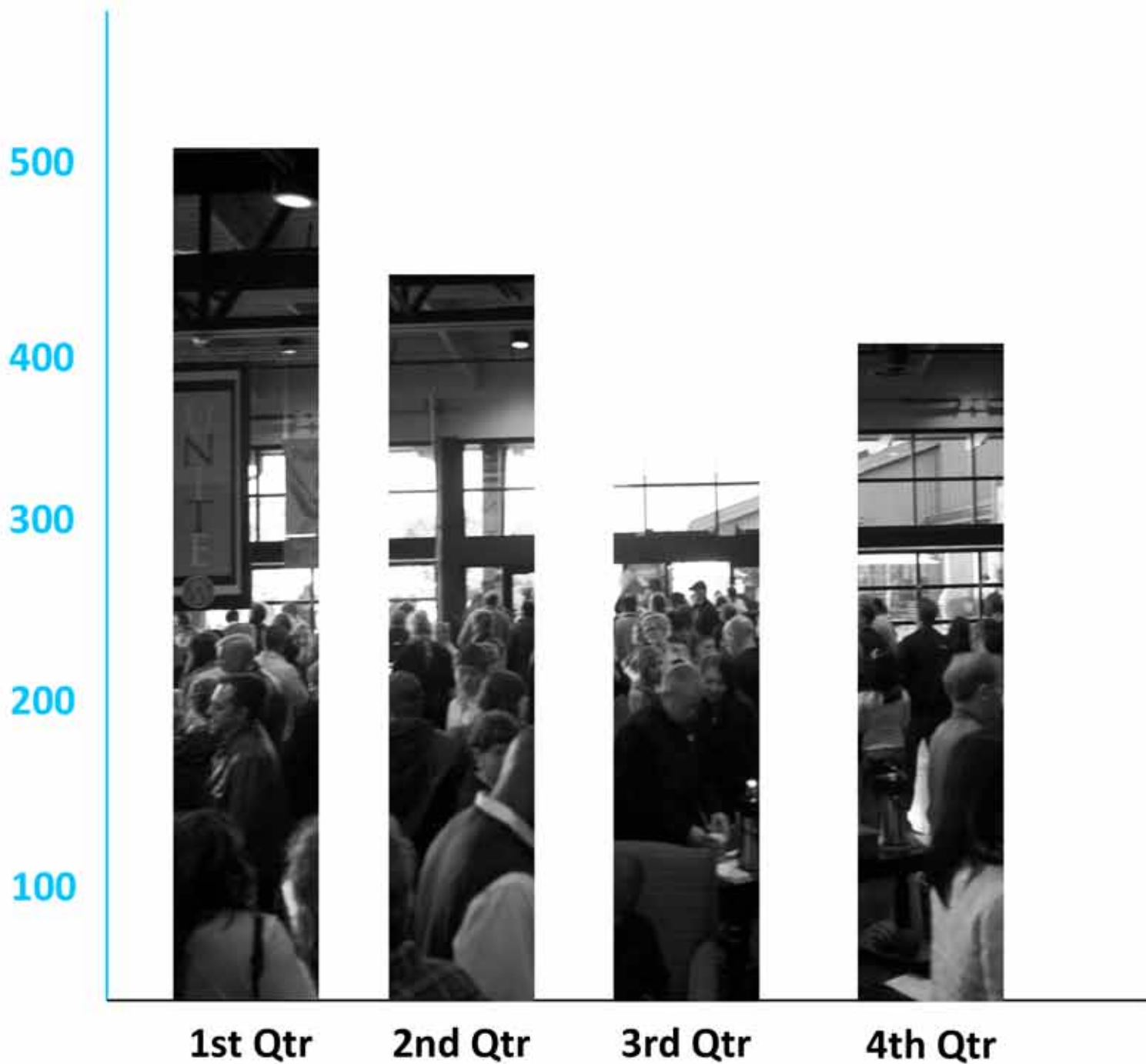


20
12

NEW LIFE ANNUAL REPORT





New Life,

This last year of New Life has been nothing short of supernatural.

In the last year we have grown 16%, baptized over 140 people, seen our Maple Valley Campus grow to a solid 250 people weekly, and received some incredible offerings.

New Life is a “hospital for sinners”, a place for people to find grace and spiritual transformation. NL has not even come close to seeing the Hand of God in our region. God is calling us to reach more people for Jesus, start more campuses, add more weekend services and missionally serve this community and world in more ways.

I want to ask the members of NL to begin to pray for 03.03.13. March 3, 2013 will be a significant day for New Life. On this day we will Re-launch our Maple Valley campus. We will launch a much needed third Sunday service and 12 other significant changes. Prepare yourself! God is about to do something new!!

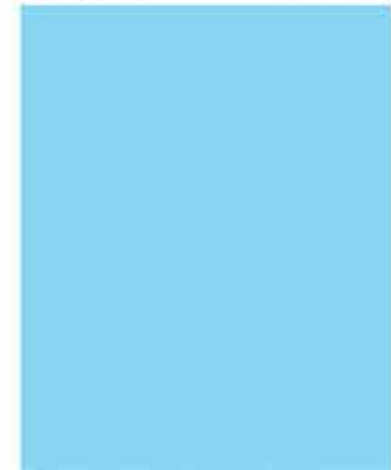
Jana and I love you and this region.

Gather. Grow. Go!!!!

Pastor Troy Jones

Type, enter to search

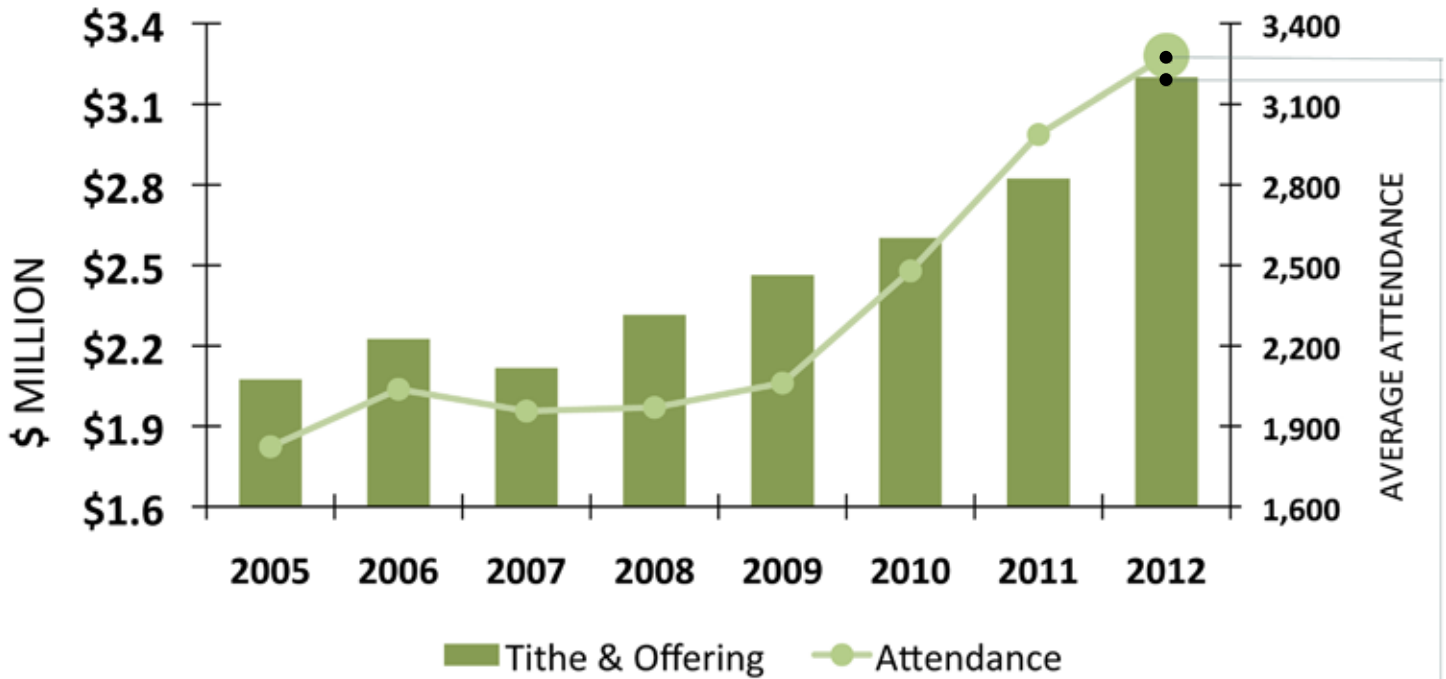
+CATEGORIES



20
12

ATTENDANCE & GIVING

ALL
CAMPUSES



BY THE NUMBERS

FROM SEPTEMBER 2011 - AUGUST 2012

TOTAL TITHE

\$3,239,351 ↑ 15%

AVERAGE WEEKLY ATTENDANCE

807

KIDS

↑ 8%

263

YOUTH

↑ 2%

2,214

ADULTS

↑ 12%

3,280

TOTAL

↑ 10%

PERCENTAGE CHANGE COMPARED TO AVERAGE WEEKLY ATTENDANCE FROM SEPTEMBER 2010 - AUGUST 2011

20
12

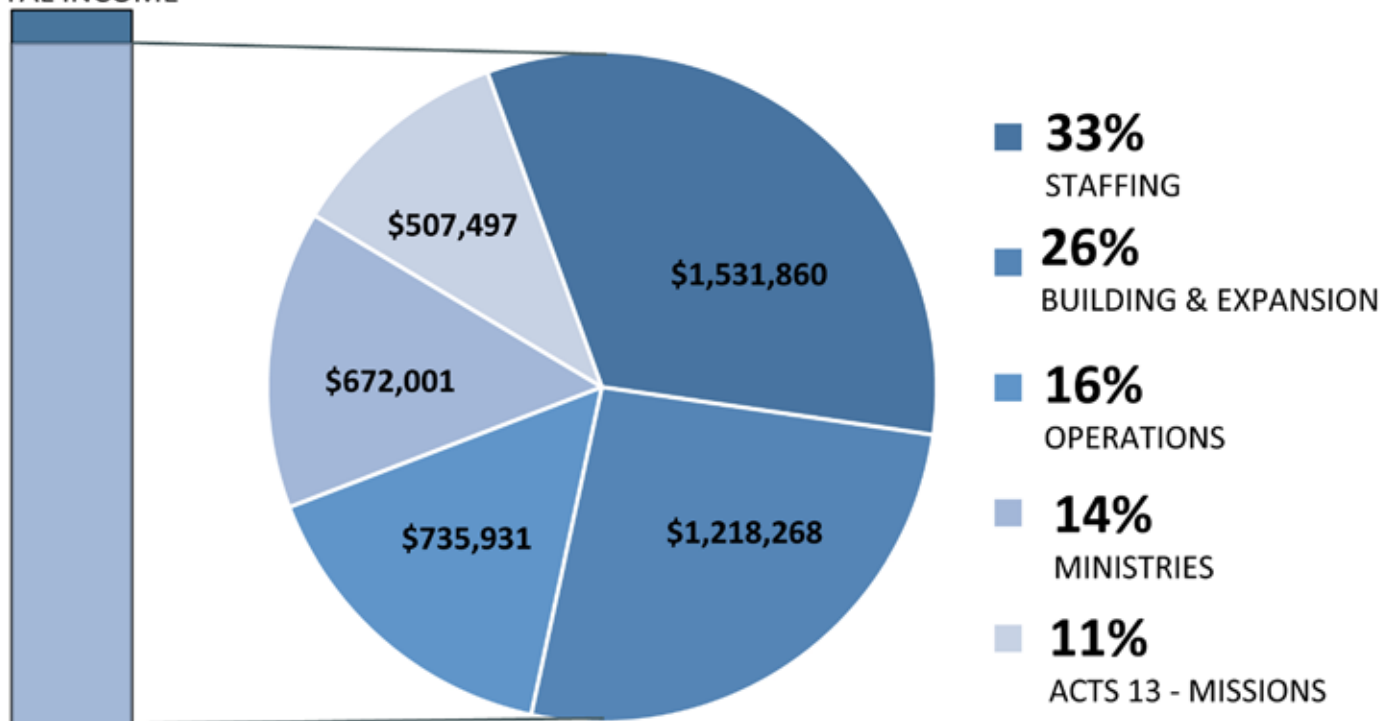
NEW LIFE CHURCH

RENTON CAMPUS FINANCIALS

NUMBERS BASED ON FY 2012 AUDIT*

\$4,746,013

TOTAL INCOME



\$4,672,969

TOTAL EXPENSES

FINANCIAL PRACTICES

INTEGRITY - TRANSPARENCY - STEWARDSHIP

- Annual Independent Audit
- Strong Financial Controls
- CPA led Finance Office
- Separation of Duties
- Regular Budget/Actual Analysis
- Designated Gifts used as Indicated

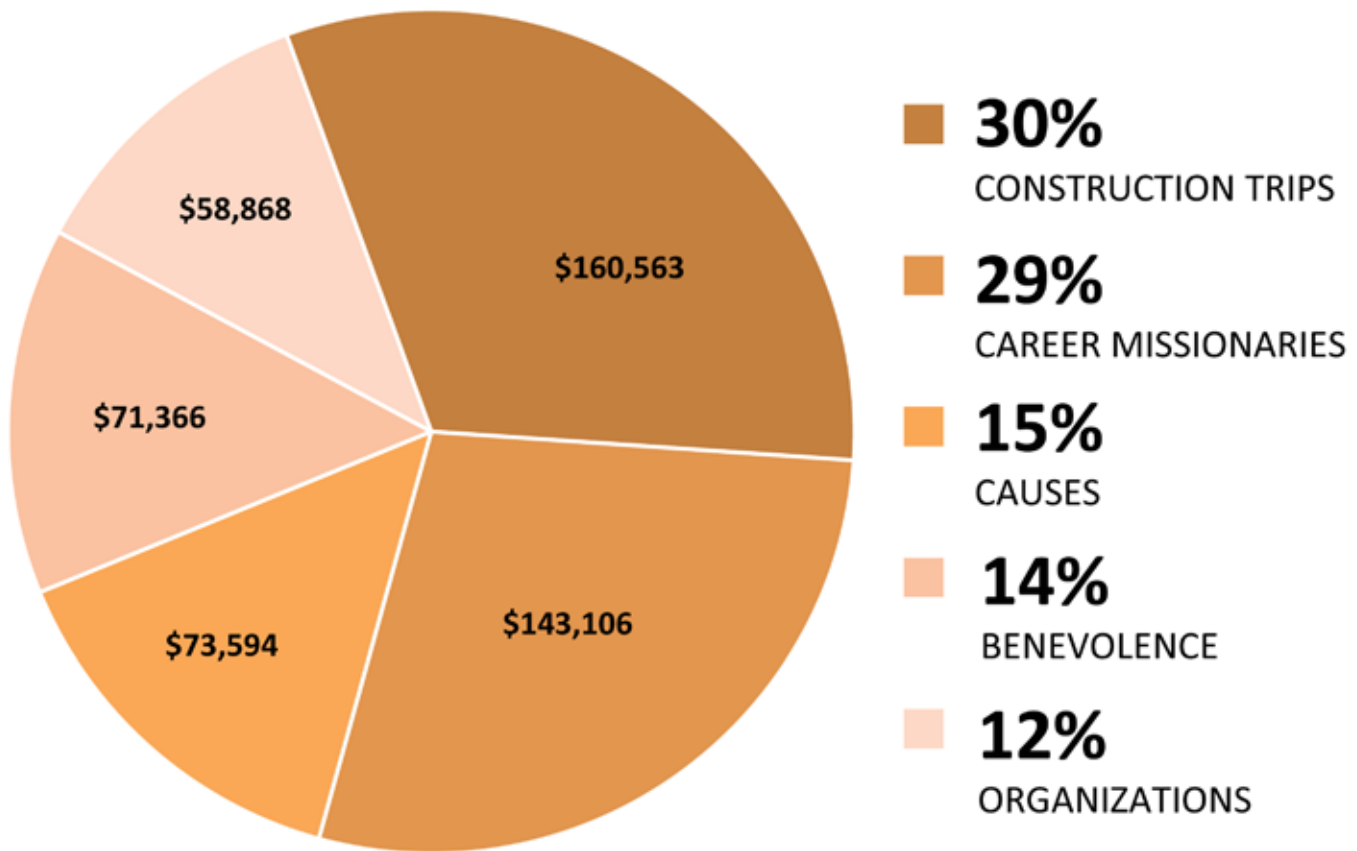
- Annual Spending Plan approved by Elders
- Monthly Finance Committee Meeting
- Monthly Review & Report to Elders
- Annual Financial Report to Membership
- **NEW!** Member of ECFA (Evangelical Council for Financial Accountability)

*AN ANNUAL AUDIT IS PERFORMED BY THE INDEPENDENT ACCOUNTING FIRM OF HENRY A. WOODS, CPA. AUDITED FINANCIAL STATEMENTS ARE AVAILABLE UPON REQUEST. PLEASE CONTACT THE CHURCH OFFICE FOR MORE INFORMATION.

20
12

ACTS 13

UNTIL ALL PEOPLE GROUPS ARE REACHED



TOTAL ACTS 13 SPENDING: **\$507,497**

LOCAL PARTNERS

- Birthday Dreams
- Genesis Project
- Habitat for Humanity
- Maple Valley Food Bank
- Northwest Harvest
- Salvation Army Food Bank
- SKC Food Coalition
- Teen Challenge
- Union Gospel Mission
- Vine Maple Place
- Vision House
- Volunteer Chore Services
- World Relief
- World Vision



11%

OF EVERY DOLLAR
GIVEN AT NEW LIFE
WENT TO ACTS 13

ACTS 13 HIGHLIGHTS

The church is not a building or a program. The church is a community of Christ followers who transform culture by serving practically demonstrating the love of God to His hurting world. Our tangible expression of reaching this world is done through ACTS 13. Below are a few examples of how your giving to ACTS 13 made a difference in 2012.

\$64,694

BENEVOLENCE

New Life provided benevolent support to over 200 families in need with assistance for food, utilities, etc.

\$51,993

HAITI

New Life built the first church in the Cite Soleil area of Port-au-Prince, one of the most dangerous and impoverished areas of Haiti.

\$143,106

CAREER MISSIONARIES

New Life supports 52 missionaries in 36 different countries around the world every month.

\$22,200

CHURCH PLANTS

New Life partnered with three church plants in Tukwila, WA, Tri-cities, WA & Springfield, MO.

\$35,872

SINGLE MOMS

New Life partners with Vision House and Vine Maple Place to provide transitional housing for single moms. We also provided over 300 free oil changes to single moms last year!

\$44,884

ENDING SEX SLAVERY

New Life partners with the Genesis Project locally and Project Rescue globally to end sex slavery.

\$80,898

MEXICO HOMES

72 people partnered with YWAM to build a home for five families in Mexico.

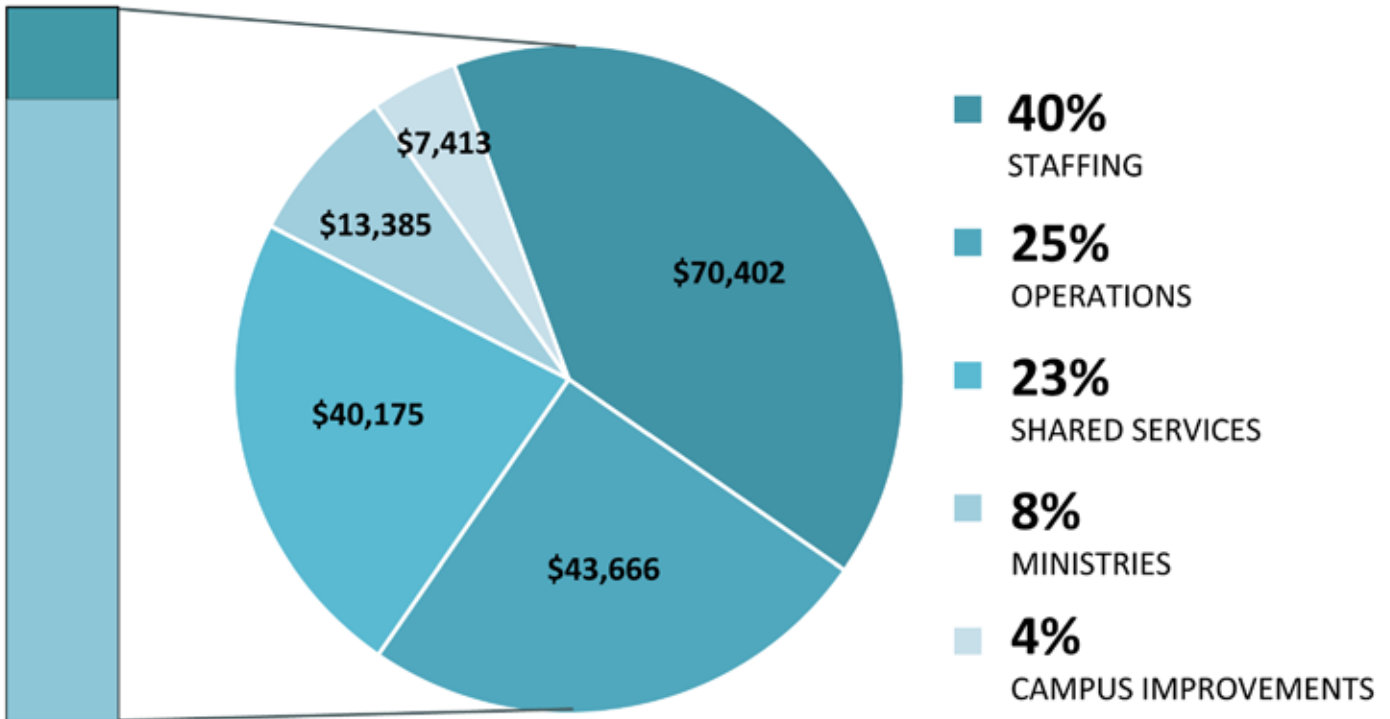
20
12

MAPLE VALLEY CAMPUS

FINANCIALS
FOR 2011 - 2012 FISCAL YEAR

\$200,877

TOTAL INCOME



\$175,042

TOTAL EXPENSES

ATTENDANCE BY AGE

FROM JANUARY 2012 - AUGUST 2012

AVERAGE WEEKLY ATTENDANCE

80

KIDS

↑ 21%

154

ADULTS

0%

17

YOUTH

JH began
Feb 2012

250

TOTAL

↑ 14%

PERCENTAGE CHANGE COMPARED TO AVERAGE WEEKLY ATTENDANCE FROM JANUARY 2011 - AUGUST 2011

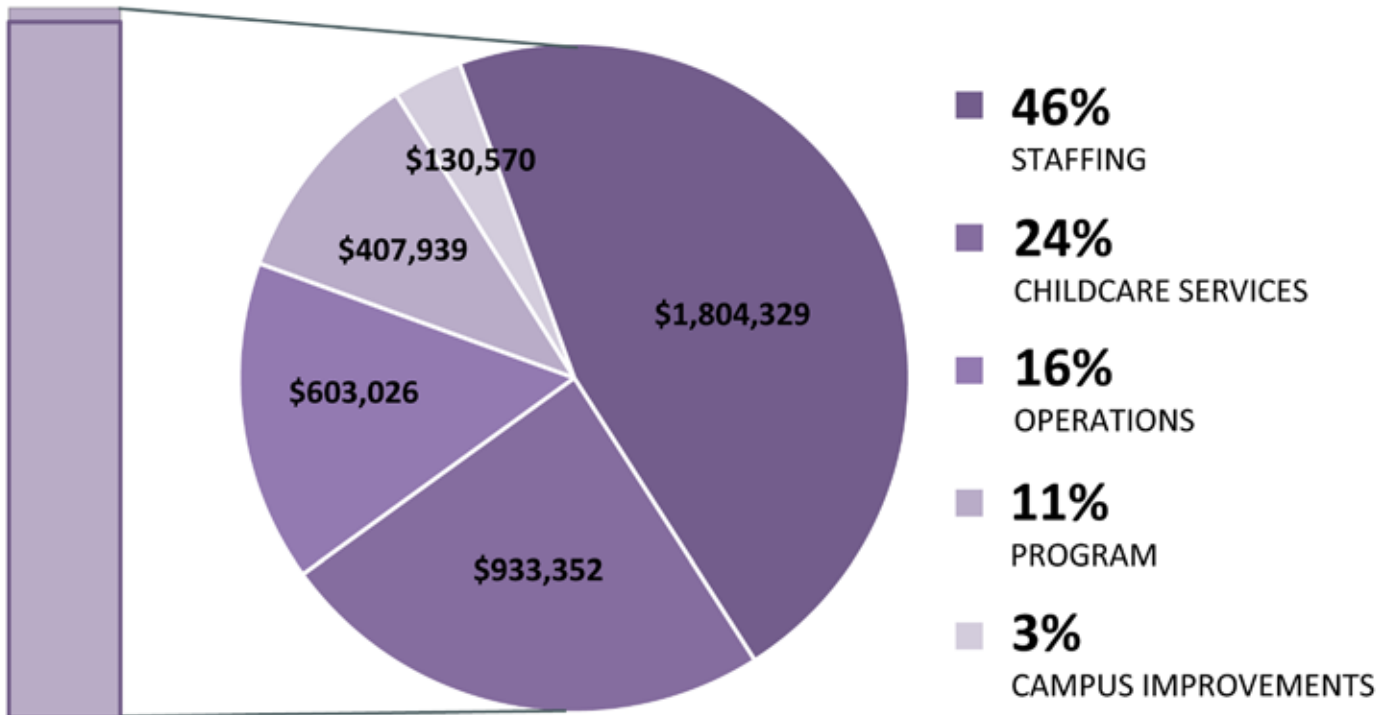
20
12

RENTON CHRISTIAN SCHOOL

FINANCIALS
FOR 2011 - 2012 FISCAL YEAR

\$3,879,216

TOTAL EXPENSES



\$3,852,060

TOTAL INCOME

ENROLLMENT 2011 - 2012

AS OF SEPTEMBER 2012

ENROLLMENT BY DIVISION

67

SLC

↑ 8%

360

ELEMENTARY

↓ 6%

87

JUNIOR HIGH

↑ 19%

514

TOTAL

↓ 1%

PERCENTAGE CHANGE COMPARED TO ENROLLMENT AS OF SEPTEMBER 2011

